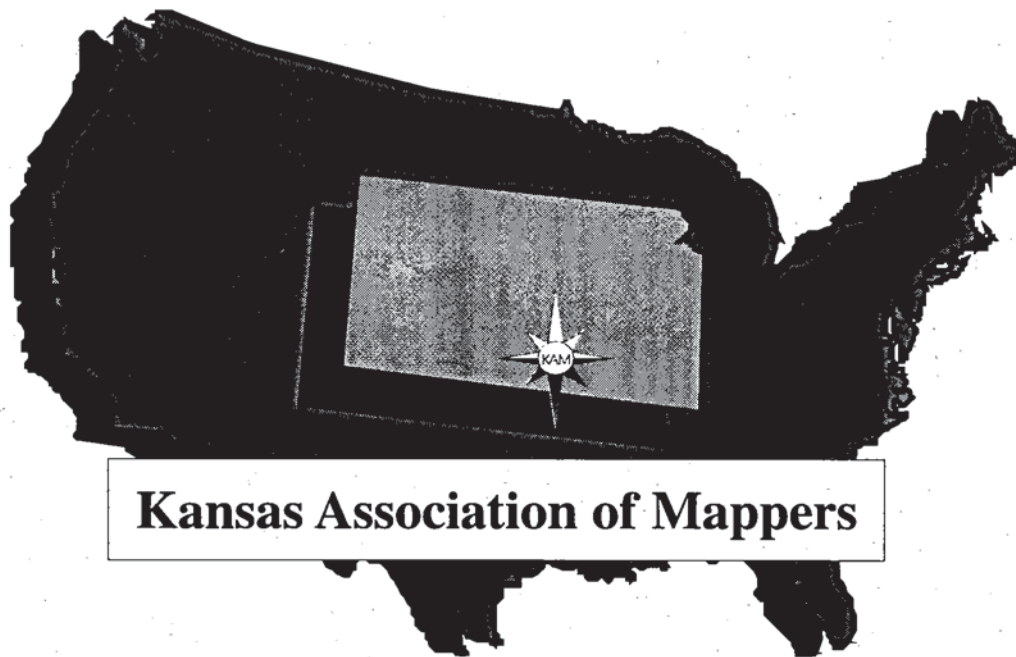


# Thirteenth Annual



**Kansas Association of Mappers**

# KAM Conference

September 27-30, Wichita, Kansas

# 1998 Program

## A Special Thank You

KAM would like to thank everyone who has contributed to this year's conference. Without our speakers, exhibitors, benefactors, Ken Wilkerson and the City of Wichita, the conference would not be possible.

### 1998 Exhibitors

Environmental Systems Research Institute, Inc.  
Farragut Systems, Inc  
GISEDGE, Inc  
Intergraph Corporation  
MARKHURD  
Mid-Kan Blueline, Inc  
Mid-West CAD  
M.J. Harden Associates, Inc  
PMC, ProMap Corp  
R & S Digital Services  
Salina Blueprint & Micrographic Systems, Inc  
Shafer, Kline & Warren, Inc  
Sokkia Corporation  
Trimble Navigation  
Walker Associates, Inc  
Western Air Maps, Inc

### 1998 Benefactors

Kansas Geological Survey  
Kansas GIS Policy Board  
MidAmerica GIS Consortium, Ltd.

## Map Gallery

New to this year's conference is the Map Gallery. Designed to give members a chance to show their work, the Map Gallery is located in the Exhibitor Hall (Crystal II & III). Stop by and see your fellow KAM members' projects.

## Parking Facilities

Conference registration includes free parking at the Broadview Hotel's designated parking garage. The garage is located to the east of the Hotel across Waco Street. Please tell the parking attendant that you are attending the KAM Conference.



## The Grand Prize

Once again, KAM is giving away a CD stereo on the last day of the conference. To be eligible for the Grand Prize, complete the Grand Prize registration form which is included in your conference materials and drop in the Grand Prize drawing box by 1:30 p.m. on Tuesday. Please do not interrupt exhibitors to receive a signature. **YOU MUST BE PRESENT ON WEDNESDAY TO WIN!**

## Education Points Available

Continuing education certificates will be available to KAM members for selected sessions of the conference. To obtain your certificate, pick-up the voucher available at the end of each eligible session. Keep this voucher, it is the only document that may be exchanged for a certificate. Between 4:00 and 5:00 p.m. Monday and Tuesday, you may redeem this voucher for the actual certificate at the registration table. If you have any questions, contact Deb Epperson. The following sessions are eligible for certificates.

Get Acquainted with ArcView GIS  
Introduction to Digital Orthophotography  
GIS Technology, Toys or Tools?  
Manual Mapping Issues  
Geodetic Control  
Enterprise GIS / The Internet  
Addressing & Street Centerlines  
Public Access Systems  
Building the NSDI Framework in Kansas  
Inking Tips & Techniques

## Conference Survey

Included in your conference materials is a survey to be completed regarding this year's conference. Please take a moment to complete this survey and give us your comments and suggestions. Your input is a key ingredient to the continuation of our annual conferences. There will be a box at the registration table throughout the conference for your completed survey.

## 1998 Program Committee

Brenda Krause, Chair  
Pottawatomie County GIS

Chris Chappell  
Jefferson County GIS

Ed Crane  
ESRI

Darlene Lister  
City of Ottawa

Rick Miller  
Kansas Water Office

Linda Sibert  
Shawnee County GIS

Scott Tabb  
KS Division of Property Valuation

# **1998 KANSAS ASSOCIATION OF MAPPERS CONFERENCE**

## **WELCOME**

*Welcome to the 13<sup>th</sup> Annual Kansas Association of Mappers Conference. The highlight of this year's conference will be our keynote speaker, Jack Dangermond, President of ESRI. Also, new to the conference agenda this year is the addition of a "hands-on" PC GIS class. Numerous educational sessions are scheduled throughout the conference to appeal to every attendee. Speakers from the public and private sector will be offering both manual mapping and GIS related sessions. For those of you that attended the KAM conference two years ago, I'm sure that you will recall our luncheon speaker. Shirley Lueth has agreed to return to this year's conference and I'm confident that she will "keep us in stitches" once again. I am certain that the KAM conference will not only provide many educational opportunities to the attendees, but it will also serve as a meeting place for each of us to communicate our thoughts and ideas with our fellow professionals. Please take advantage of the many educational (and fun) offerings that are being presented at the KAM conference. I am looking forward to seeing you this week.*

*Ellen M. Long, KM  
President*

## **Thirteenth Annual KAM Conference Schedule**

**Sunday, September 27, 1998**

**8:30 a.m. – 12:00 p.m. Get Acquainted with ArcView GIS:  
Morning Session**

**Wichita City Hall Training Facility  
455 N. Main**

**OR**

**1:00 p.m. – 4:30 p.m. Get Acquainted with ArcView GIS:  
Afternoon Session**

*Ken Wilkerson, GISEdge, Inc*

*This half-day seminar provides the new user with a brief introduction to GIS concepts. The seminar will focus on a brief introductory instruction, followed by a series of real-world hands-on exercises that will teach the user how to create a thematic map, analyze census data for location analysis, and plot a finished product. The user will gain a better understanding of how ArcView GIS can be used in their organization to answer mission-critical questions.*

**1:00 p.m. – 5:00 p.m. PKM (Professional Kansas Mapper) testing  
KM (Kansas Mapper) testing**

**Balcony Room  
Balcony Room**

**2:00 p.m. – 5:00 p.m. AutoCAD Map Users Meeting**

**Directors Room**



# Thirteenth Annual KAM Conference Schedule

Monday, September 28, 1998

8:00 a.m.–10:00 a.m.	<b>Conference Registration</b>	<b>Registration Area</b>
10:30 a.m.–11:00 a.m.	<b>Conference Welcome &amp; Review</b> <i>Ellen Long, KM – KAM President</i>	<b>Crystal I</b>
11:00 a.m.–Noon	<b>Keynote Speaker</b> <i>Jack Dangermond</i> <i>President and Founder of Environmental Systems Research Institute (ESRI)</i>	<b>Crystal I</b>
12:30 p.m.–2:00 p.m.	<b>Luncheon</b>  Annual KAM Awards Executive Board Nominations  <b>Luncheon Speaker</b> <i>Shirley Lueth, Humorist</i>	<b>Crystal III</b>
2:30 p.m.–4:00 p.m.	<b>Concurrent Sessions</b>  <b>Introduction to Digital Orthophotography</b> <i>George Lee, USGS</i> This course covers the fundamentals of DOQQ use beginning with a brief overview of photogrammetry. Topics will include the digital orthophotography process, the National Digital Orthophoto Program, applications of digital orthophotos, satellite technology and future technologies.  <b>GIS Technology, Toys or Tools?</b> <i>Scott McBride, Sedgwick County GIS</i> For local government, the real value of GIS lies not so much in the high profile projects as it does in simplifying the tasks that are performed repeatedly every day. A successful GIS program is one that recognizes GIS as a collection of tools and applies GIS as an information resource. This session is a "how-to" session for local government users of GIS. We will take a very pragmatic approach. You will see how Sedgwick County uses GIS to create efficiencies, make more informed decisions, and better communicate information to the public.  <b>Inking Tips &amp; Techniques</b> <i>Susan Williams, PKM, Division of Property Valuation</i> This session will include a review in the use and care of technical pens, ideas for keeping your pens in working order, and hints for making your inking job easier. There will also be a discussion on new equipment and ordering replacement supplies.	<b>Rose Room</b>          <b>Directors Room</b>          <b>Balcony Room</b>
4:00 p.m.–5:00 p.m.	<b>Redeem Continuing Education Vouchers</b>	<b>Registration Area</b>
5:00 p.m.–8:00 p.m.	<b>Exhibitor Reception &amp; Map Gallery</b>  Drinks & hors d'oeuvres Door Prizes Exhibitor Introductions Remember to register for the Grand Prize Drawing!	<b>Crystal II &amp; III</b>

# Thirteenth Annual KAM Conference Schedule

Tuesday, September 29, 1998

2:00 p.m.–3:30 p.m. **Concurrent Sessions – continued**

**Public Access Systems**

**Rose Room**

*Kelly Ratchinsky, Shafer, Kline & Warren, Inc.*

This session will be both a presentation and a discussion forum for anyone interested in implementing a public access system. The session will begin a presentation on the who, what, when, where and why of implementing public access. The presentation will focus on the method by which access can be given to the general public, with a live display of the public access system implemented at Shawnee County, Kansas. This presentation will also look at what has transpired since public access was implemented and look at the evolution of the application since inception. A very informal discussion group will follow the presentation moderated by Kelly and various staff from Shawnee County. Come prepared to be involved in the discussion!

**Manual Mapping Issues: RR Abandonment & Curves**

**Balcony Room**

*Scott Tabb, PKM, Division of Property Valuation*

This session will be divided into two major topics: 1) The relevant statutes surrounding railroad abandonment and the never ending question; Who owns the railroad rights-of-way in Kansas? And 2) a short review of the fundamentals of curves used in conjunction with cadastral maps.

4:00 p.m.–5:00 p.m. **Redeem Continuing Education Vouchers**

**Registration Area**

8:00 p.m.– ?

**An Evening at "The Cowboy Club"**

You are invited to The Cowboy Club (corner of 2nd & Mosley) for an evening of fun. A "special area" has been reserved for conference attendees. You are responsible for your own transportation, cover charge (\$3.00), and all drinks (\$1.50). We hope to see you there.

# Thirteenth Annual KAM Conference Schedule

Wednesday, September 30, 1998

9:00 a.m.–9:30 a.m.

**Voting**

**Plaza Room**

To be eligible to vote, you must wear your name tag and have paid your membership dues for 1997.

10:00 a.m.-11:45 a.m.

**The Great Mapping Debate**

**Crystal I**

*Ed Crane, ESRI ; and Guests*

Surveyors, Mappers, Appraisers, and Engineers Views on Property Mapping for the Whole Community: Who is in charge, and how do we make this work?

Noon – 2:00 p.m.

**Luncheon**

**Crystal II**

**Closing Speaker**

*Ivan Weichert, Shawnee County Public Works*

2:00 p.m.– 3:30 p.m.

**Annual Business Meeting**

**Crystal II**

Announcement of new Executive Board  
Swearing in of Executive Board  
Grand Prize Drawing

# Thirteenth Annual KAM Conference Schedule

Tuesday, September 29, 1998

7:45 a.m.–9:00 a.m. **Coffee & Rolls with Exhibitors**

**Crystal II & III**

9:00 a.m.–10:30 a.m. **Concurrent Sessions**

**Geodetic Control**

**Rose Room**

*Steve Thompson, Kansas State University-Salina*

This session covers the fundamentals of geodetic control. What is it? Why is it important? What standards are being developed and why are they important? In addition, there will be an overview of the Kansas High Accuracy Reference Network (HARN).

**Addressing & Street Centerlines**

**Balcony Room**

*Tim M. Sosinski, M J Harden & Associates*

One of the more common, yet most significant elements of local government database construction, is the capture, storage and use of local addresses. This presentation will be divided into two major topics: 1) design issues for a master address file, and 2) design issues for street centerline files. This program will provide conceptual definitions for both types of files, major design components, generic database structures for both the graphic and non-graphic data files, map maintenance and display, and the relationship of a master address file to a street centerline file.

**Enterprise GIS / The Internet**

**Directors Room**

*Cyril Smith, KM, City of Olathe; Ken Nelson, DASC; & Scott Smith, City of Lenexa*

Developing a comprehensive set of geospatial data for an entire organization requires careful planning. Planning for integration of data involves both technical and organizational considerations. Issues such as strategic planning, synchronizing updates, development of database designs and data documentation, will be discussed with a focus on sites attempting various levels of enterprise GIS. In addition, the World Wide Web is the future of communication and data exchange. Like all things digital, GIS is a great candidate for this new environment. But, the internet is relatively new and is still a mystery to many. This session will deal with the basics of the internet, the way in which it lends itself to digital mapping, and how the Internet can be used to augment an Enterprise GIS.

10:30 a.m.–Noon

**The Changing Face of Leadership**

**Crystal I**

*Kyle Ermoian, Coach, Instructor, Pastor & Writer*

Noon –1:30 p.m.

**Lunch with Exhibitors**

**Crystal II & III**

**KSU-Salina, GIS Associate Degree & Certificate Programs**

*Steve Thompson, KSU-Salina*

A brief overview of these programs offered at Kansas State University-Salina.

2:00 p.m.–3:30 p.m.

**Concurrent Sessions**

**Building the NSDI Framework in Kansas**

**Directors Room**

*Rick Miller, Kansas Water Office*

This session will address the emerging National Spatial Data Infrastructure (NSDI) Framework and ongoing activities in Kansas in support of this national effort. The session will describe the nature of the NSDI Framework. Followed by an overview of Kansas initiatives to build Framework related standards, selected thematic databases, and proposed metadata and geo-spatial data sharing partnerships. The session will conclude with a discussion on how to proceed in developing the NSDI Framework in Kansas.

*Continued on next page*



# Biographies

## Keynote Speaker

**Jack Dangermond** graduated with a B.S. in Environmental Science from California Polytechnic College, Pomona; M.S. in Urban Planning from the Institute of Technology at the University of Minnesota; and an M.S. in Landscape Architecture from the Graduate School of Design, Harvard University, where he worked in the Laboratory for Computer Graphics and Spatial Design. He is the founder and President of Environmental Systems Research Institute (ESRI) of Redlands, California, a firm which has been in the Geographic Information System (GIS) field since 1969. During the first 15 years of his career, Mr. Dangermond worked on dozens of significant and promising efforts in the areas of developing and applying GIS technology. Early efforts included developing environmental and landscape assessment for regional planning, studies in methodology for transmission line and power plant siting, and new town planning.

ESRI is now generally acknowledged as the technical and market leader in GIS software and custom turnkey systems, with the largest install base in the world and more than 100,000 systems on PCs, workstations and computer networks. Mr. Dangermond has been the recipient of numerous fellowships, grants and awards, including the Urban and Regional Information Systems Association Horwood Award "for outstanding contributions...to the information systems field," and the Association of American Geographers (AAG) Honorary Membership, presented to individuals who have made exemplary contributions to geography. He has served on various national advisory committees and boards, including, for example, NASA's Science and Technology Advisory Committee. He continues to deliver keynote addresses at various meetings and conferences around the globe.

Jack has authored hundreds of papers dealing with GIS technology, published in journals and conference reports in such diverse fields as photogrammetry, computer science, planning, environmental science and cartography.

Jack is recognized in both academia and industry as a leader of and an authority in the GIS field. With 30 years experience, he and his firm are pioneers in digital cartography and natural resource mapping.

## Luncheon Speaker

**Shirley Lueth** was born and raised in southern Illinois, Mrs. Lueth attended Southern Illinois University in Carbondale, IL. Her ambition at 21 was to be a Princess - instead she came to Nebraska, married Lee and had seven children and became a Queen. At last count - there are seven grandchildren. Like all families, the Lueth's fuss a little, fight a lot, forget the bad, and are forever remembering the good!

## Closing Speaker

**Ivan Weichert** is the Deputy Director of the Shawnee County Public Works department. In addition, he is the Shawnee County Zoning / Flood Plain Administrator, Chairman of the Shawnee County GIS Policy Committee, Chairman of the Kansas GIS Standards Task Force, President Elect of the Kansas Planning and Zoning Officials and performs other duties as deemed necessary. After 15 years as a professional builder, Mr. Weichert became increasingly involved in local and regional government issues, and served 6 years on the Shawnee County Planning Commission, 2 years as chairman. Mr. Weichert then made the jump over the fence to public service in fall of 1993 as Zoning Administrator for Shawnee County. He recognized early, the potential of GIS to impact the ability of government to better serve the informational needs of the public as well as its own internal efficiency. His favorite work philosophies are "If it ain't broke...break it!" and "Don't just think outside the box, throw the box away".

## Session Speakers

**Ed Crane** works for ESRI, based out of Kansas City, Missouri. He is a past president of URISA and a longtime member of the Kansas Association of Mappers.

**Kyle Ermoian** is a native of Chicago. He is a graduate of Southern Illinois University, with a degree in Radio/Television Communications. Kyle spent the next ten years in Los Angeles rock radio station management. A life change led Kyle to enroll in the School of Theology at Claremont California where he received a Masters degree in 1987. Kyle has since been a pastor in Oregon, California and now in Kansas. Kyle currently teaches in the Leadership Studies department at Fort Hays State University and is the inspirational coach for the Tigers Football and Basketball teams. Kyle writes a weekly column on leadership in the Business section of The Hays Daily News.

**George Lee** is a cartographer with the National Mapping Division of the U.S. Geological Survey and completed his academic studies at the University of California. He has been involved with division-wide research and development activities as well as production operations at the Western Mapping Center. Mr. Lee has 25 years of mapping experience and has been involved with orthophotos throughout his career. Mr. Lee has also been involved with the development and implementation of new systems into operations and investigation of new technologies for the National Mapping Program. Mr. Lee is currently the Program Manager for National Digital Orthophoto Program.

**Scott McBride** is currently serving as Director for the two year old Geographic Information Systems Department in Sedgwick County, Kansas. Within two years, Scott lead Sedgwick County through the conversion from an automated mapping program to a complete implementation of GIS supporting Sedgwick County and the surrounding communities. This has been a highly successful implementation that has focused on customer service and cost effective results.

# Biographies continued

## Session Speakers

**Rick Miller** serves as State GIS Coordinator and staff to the Kansas GIS Policy Board. He has worked in the GIS field for over 11 years, holding previous positions as GIS Coordinator with the Kansas Department of Health and Environment and as a Geographer with the U.S. Bureau of the Census. Rick currently chairs the Kansas GIS Policy Board's Technical Advisory Committee, represents the GIS community on the state Information Technology Advisory Board, and serves as Chair of the MidAmerica Geographic Information Systems Consortium. He has been affiliated with the National States Geographic Information Council since 1992 and holds a B.S. in Education and M.A. in Geography, both from the University of Kansas.

**Ken Nelson** is the Data Access and Support Center (DASC) Manager and Research Assistant (GIS Specialist) at the Kansas Geological Survey (KGS). He graduated from the University of Kansas with a Bachelor of Arts degree in Geography and Environmental Studies in 1993. As DASC Manager, Ken is primarily responsible for contract management, supervision of DASC daily operations, and promotion of the Kansas GIS Initiative. Ken also provides GIS support services for research projects at the KGS. In addition to his duties at DASC, Ken is the Chairperson of the Mid-America GIS Consortium (MAGIC) Communications Committee.

**Kelly Ratchinsky** spent seven years in Central British Columbia, Canada developing GIS for the Forestry sector. That was followed by three years in the Middle East helping a small Middle Eastern Country (QATAR) develop and implement GIS for the entire country. Kelly came back to North America and has been working with Shafer, Kline and Warren, for the past three years as Director of their GIS Department.

**Cy Smith, KM** is the GIS Manager for the City of Olathe in Johnson County, Kansas, where he is coordinating the development of an enterprise-wide GIS. Cy has served as the State GIS Coordinator for Kansas under Governor Finney, and has worked as a GIS consultant for PlanGraphics, Inc. in Frankfort, Kentucky. He was also a regional cartographer during the Kansas property reappraisal in the 1980s. He served as President of the Kansas Association of Mappers in 1988.

**Scott Smith** is currently the GIS Manager for the City of Lenexa. He is a 1986 graduate of Southwest Missouri State University and has been involved with GIS since 1988. His work experience includes Black & Veatch, Little Rock Public Works and Johnson County Planning with an emphasis in application programming and data conversion for local governments.

**Tim Sosinski** has been involved with the construction and maintenance of street centerline files and address files for over twenty years. He was a part of the development team for one of the earliest Address File and Street Centerline file programs in the Country while working for the City of Kansas City, KS from 1974-1986. He coordinated the Parcel Mapping efforts at Wyandotte Co, KS from 1987 - 1991. For the past seven years he has worked as a consultant and applications programmer for utilities and local government. Mr. Sosinski has presented various papers on the subjects of street centerline files at URISA, ESRI User Conferences and the Mid West GIS Conferences. He is currently a consultant with the Government & Utilities Division at M.J. Harden Associates in Kansas City, Missouri.

**Scott Tabb, PKM** is a Cartographer with the Kansas Department of Revenue, Division of Property Valuation. He teaches numerous mapping courses for the Division and is currently involved with implementing GIS at the Department of Revenue. His work experience includes Cass County, Missouri and Douglas County, Kansas. He has been working in county and state government since 1987. Scott is currently the President-elect of the Kansas Association of Mappers.

**Stephen R. Thompson, P.E.**, is an Associate Professor at Kansas State University-Salina where he is currently a member of the Arts, Science, and Business Department. In addition, he is the section head for the new GIS/GPS Section, GIS/GPS coordinator, advisor to 25 GIS students, faculty advisor to the student chapter of Kansas Society of Land Surveyors and he serves on the Kansas Governor's GIS Technical Advisory Committee. His work has included projects for Saudi Arabia and Egypt and designing and implementing the first GIS Associate Degree Program in the United States. He was named Outstanding Faculty Member at KSU-Salina in 1991.

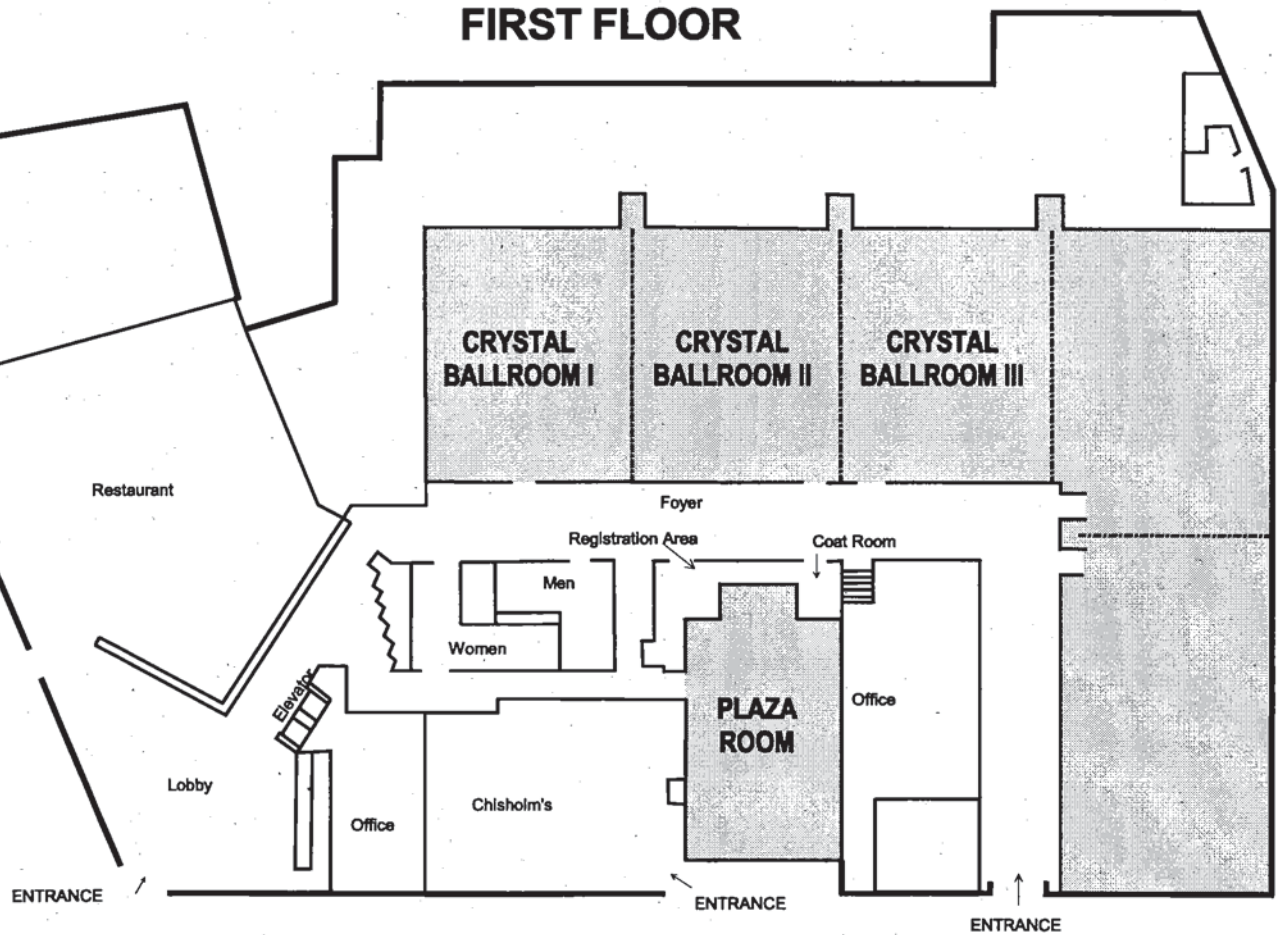
**Ken Wilkerson**, President of GISEdge, Incorporated, relocated to Wichita, Kansas in 1995 to enhance the pioneering spirit of the Midwest, although not with agriculture, but with the new advancements of GIS technology. Ken has more than nine years experience involving project and resource management, as well as planning and scheduling in progressive GIS environments. Ken is a graduate from the University of Idaho with a degree in Geography, his major emphasis was in geographic information systems (GIS), economic geography, and computer mapping. Ken received much of his experience while working six years with the GIS industry leader Environmental Systems Research Institute (ESRI) as a technical project manager and instructor. Some of his unique International project assignments included a ten week Rent-A-Tech project with the Government of Venezuela, and spokesman at the first annual GIS users conference in Beijing, China, themed "Unveiling New GIS Technology." Ken has also conducted many training classes throughout the United States and in several foreign countries including China, Japan, and Taiwan.

**Susan R. Williams, PKM** began working for the State of Kansas, Department of Revenue, Division of Property Valuation in February of 1986. She worked as a Regional Cartographer through all phases of the Reappraisal Program, participated in the development and instruction of PVD mapping courses, and has instructed inking techniques since 1983. Susan is a founding member of the Kansas Association of Mappers and has served as both President and Treasurer.

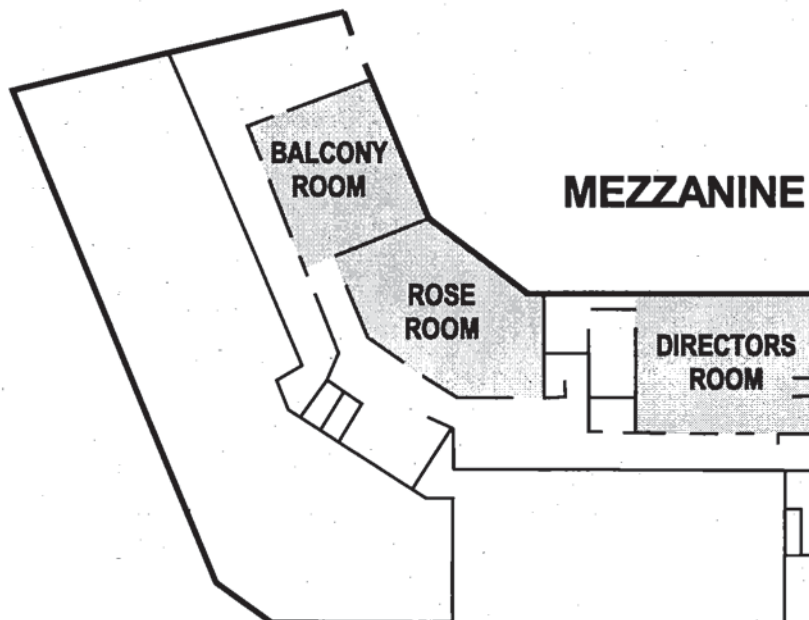


# Hotel Floor Plan

## FIRST FLOOR



## MEZZANINE



# City of Wichita Inset

