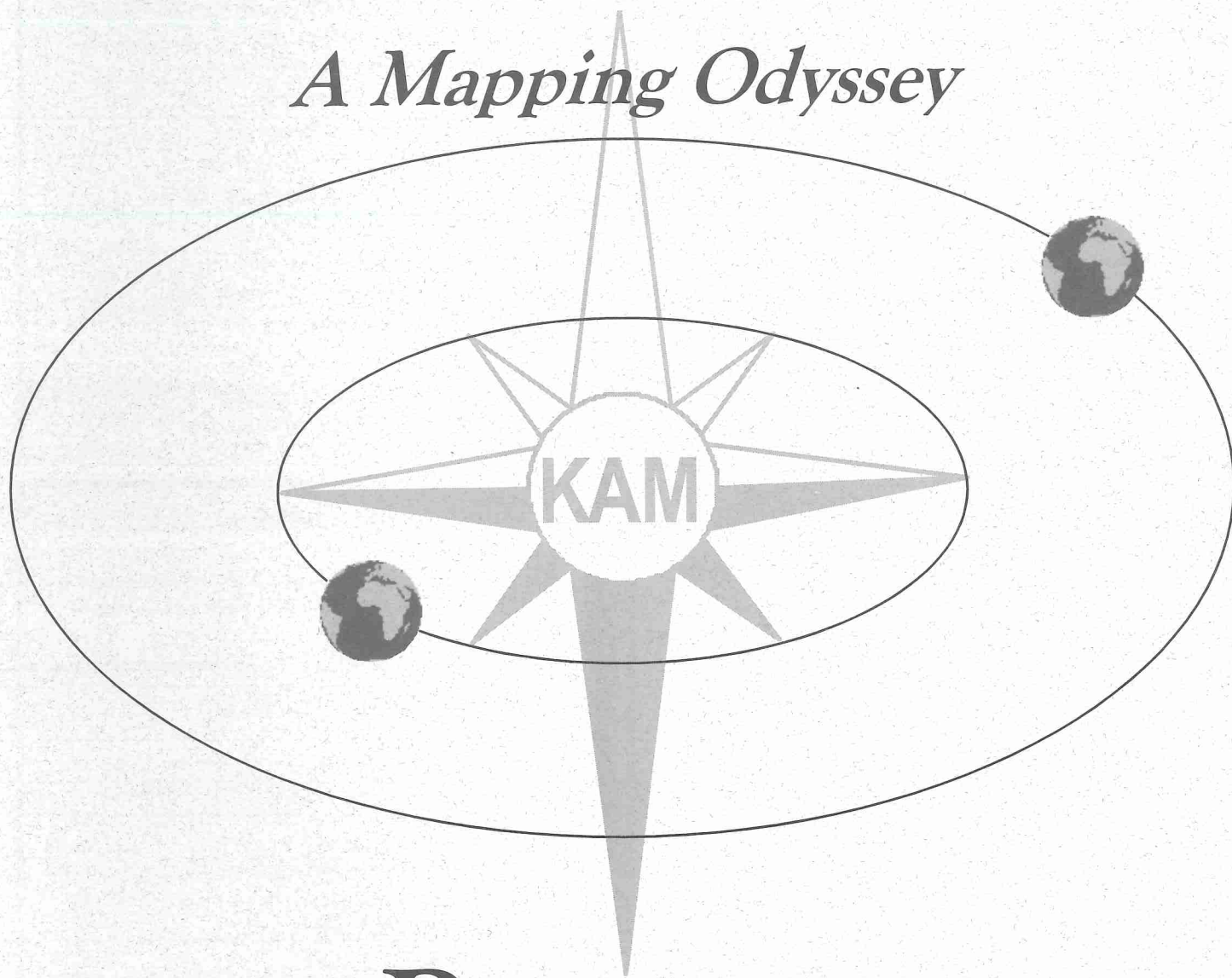


# Sixteenth Annual KAM Conference

*A Mapping Odyssey*



## Program

*Kansas Association of Mappers*

*September 23-26, 2001—Wichita, Kansas*



## Education Points Available

Continuing education certificates will be available to KAM members for selected sessions of the conference. Certificates will be distributed at the end of each session. The following sessions are eligible for certificates.

Addressing

COGO

Crime Analysis

GPS

Data, Data, Data

Hoisington Tornado: Using GIS in Disaster Situations

Hypertext Markup Language (HTML) and JavaScript Basics

IAAO Parcel Mapping Standards 2001

Kansas Damage Assessment Team

Kansas Map and Parcel Numbering System

NASA Great Plains Regional Earth Science Applications Center

New CAMA Presentation

Ortho-Corrected Photo Imagery & Parcel Placement

Intergovernmental Cooperation

Section Corner Project

Statewide Aerial Photo Basemap Project

TIGER Modernization & Accessing, Using, & Mapping Census 2000 Data

## A Special Thank You

KAM would like to thank everyone who has contributed to this year's conference. Without our speakers, benefactor and exhibitors, the conference would not be possible.

### 2001 Exhibitors

DASC

Drexel Technologies, Inc.

ESRI

GISEdge, Inc.

Kucera International

MarkHurd

Mid-Kan Blueline

Midland GIS Solutions

M.J. Harden Associates, Inc.

PMC Pro-Map

R & S Digital

Shafer, Kline & Warren, Inc.

Walker Associates

### 2001 Benefactor

MAGIC

## 2001 Program Committee

Ellen Odom, Chair  
Division of Property Valuation

Don Cleveland  
M.J. Harden Associates, Inc.

Steve Daw  
Shafer, Kline & Warren, Inc.

Brenda Krause  
Pottawatomie County

Carol Kriebs  
Shawnee County

Darlene Lister  
City of Ottawa

Linda Sibert  
Shawnee County

Ivan Weichert  
State of Kansas

Sixteenth Annual  
KAM Conference  
*A Mapping Odyssey*

## Map Gallery

Be sure to stop by and visit the Map Gallery and see your fellow KAM members' projects. The Map Gallery is located in the Exhibit Hall (Salon I & II).

## The Grand Prize

KAM is giving away a DVD player on the last day of the conference. To be eligible for the Grand Prize, complete the "Grand Prize Registration Form" which is included in your conference materials. Please drop your completed form in the Grand Prize drawing box, which will be located at the registration table by 1:30 PM on Tuesday. Please do not interrupt exhibitors to receive a signature.

**YOU MUST BE PRESENT ON WEDNESDAY TO WIN!**

## The Benders

Join the fun Tuesday night and let the Benders entertain you. They play a wide variety of music from the 50's and 60's. The Benders are a unique blend of costume, dance steps, and spontaneous humor. With a solid dance beat, their main goal is to provide an entertaining experience. If you like the saxophone, this is a band you won't want to miss.



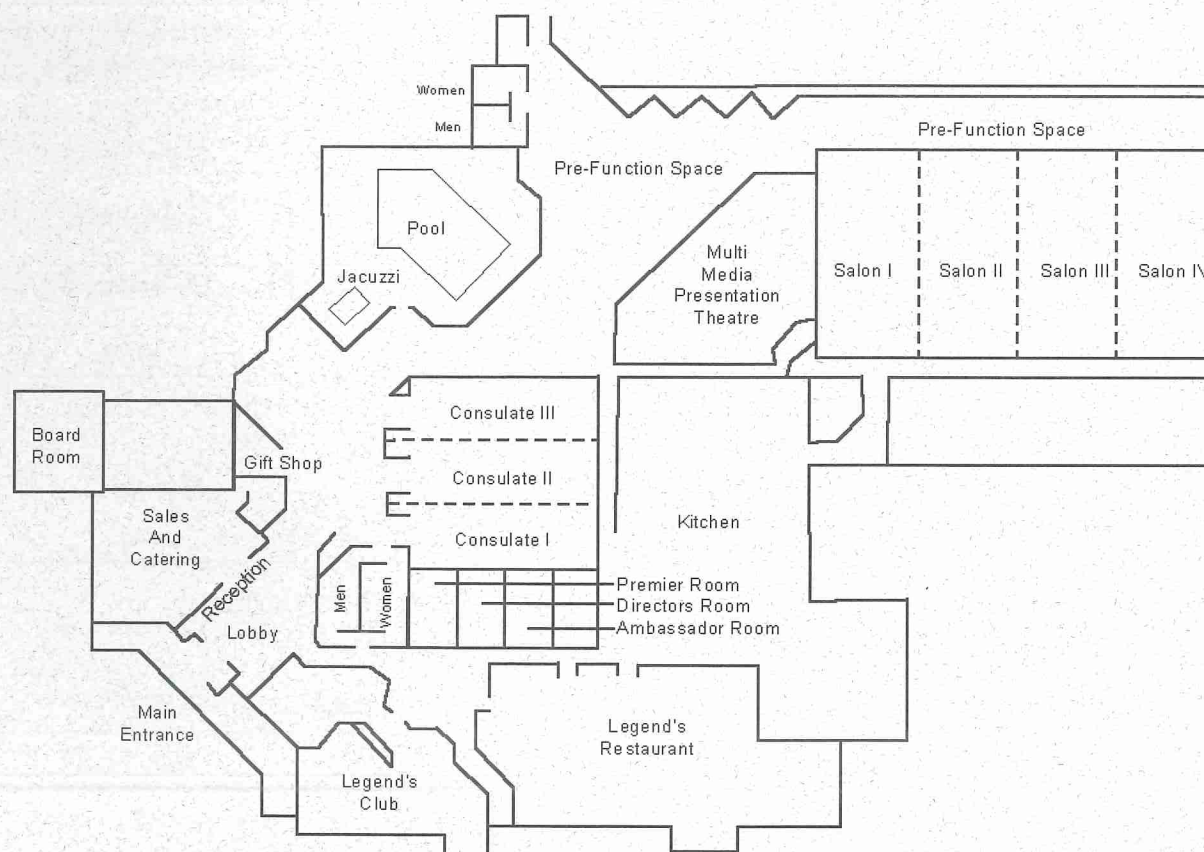
## 2001 KAM CONFERENCE WELCOME


Hi and welcome to the Sixteenth Annual Kansas Association of Mappers Conference. This conference will be a fun filled educational experience. We will kick off the conference on Monday with our keynote speaker Shelby Johnson. The Magical Tom Burgoon will entertain us at lunchtime and we'll end the day with the exhibitor reception. The reception will be the place to meet new friends, reminisce with old friends, win door prizes and receive your free KAM t-shirt (you must be present to receive your t-shirt). Additionally, the short sessions will begin on Monday and continue until Wednesday. Continuing education certificates will be offered for most sessions, so remember to pick-up your certificates as you leave each session. On Tuesday enjoy brunch and an ice cream sundae bar with the exhibitors. That evening, the BENDERS will provide our entertainment with their 50's, 60's, and 70's style music. This program contains information about every facet of the conference, so take a moment to review the information.

I would like to thank the Program Committee (listed on page two) for their hard work and dedication. If not for them, this conference would not be possible. If you have any questions or need help, please ask any of the Program Committee members or Executive Board members.

Linda Sibert  
President

### Hilton Wichita Airport Executive Conference Center



 Sixteenth Annual  
KAM Conference  
A Mapping Odyssey



# Sixteenth Annual KAM Conference Schedule

## Sunday, September 23, 2001

1:00 p.m.

Designation Testing

*Premier Room*

Board Meeting

*Board Room*

4:00 p.m.

AutoCAD Users Group Meeting

*Premier Room*

## Monday, September 24, 2001

8:00 a.m.–10:00 a.m.

Conference Registration

*Pre-function Space*

10:30 a.m.–12:00 p.m.

Conference Welcome & Keynote Address

*Consulate I, II & III*

Linda Sibert – KAM President

Shelby Johnson–Arkansas State Land Information Coordinator

12:00 p.m.–2:00 p.m.

Luncheon

*Salon III & IV*

Annual KAM Awards

Executive Board Nominations

Luncheon Speaker

Tom Burgoon, Magician, Comedian, Hypnotist, Shoplifter and Practical Joker

2:30 p.m.–3:30 p.m.

Concurrent Sessions

Section Corner Project

*MM Theater*

Steve Thompson, P.E., KSU–Salina

Kansas Damage Assessment Team

*Consulate II*

Jerry Mallory & Mike Killion, Johnson County

TIGER Modernization & Accessing, Using, & Mapping Census 2000 Data

*Consulate III*

Craig Best & John W. Flack, United States Bureau of the Census

Exhibitor Demo–M.J. Harden Associates, Inc.

*Consulate I*

3:45 p.m.–4:45 p.m.

Concurrent Sessions

Statewide Aerial Photo Basemap Project

*MM Theater*

Rick Miller & Ivan Weichert, Kansas Information Technology Office

Hoisington Tornado

*Consulate II*

Randy Miller–City of Hoisington, Kelly Brantum–City of Russell, Bj Wooding–Barton County

Hypertext Markup Language (HTML) and JavaScript Basics

*Consulate III*

Chris Welchans, City of Olathe

Exhibitor Demo–ProMap

*Consulate I*

6:00 p.m.–8:00 p.m. Exhibitor Reception & Map Gallery

*Salon I & II*

Drinks & hors d'oeuvres

Get your free KAM T-shirt.

Door Prizes

Exhibitor Introductions

Remember to register for the Grand Prize drawing!

Sixteenth Annual  
KAM Conference  
A Mapping Odyssey



# Sixteenth Annual KAM Conference Schedule

Tuesday, September 25, 2001

8:30 a.m.–9:30 a.m.

**Concurrent Sessions**

**Ortho Corrected Photo Imagery & Parcel Placement**

Mike Hut & Carl Meinke, M.J. Harden Associates, Inc.

**COGO**

Steve Atchison & Lynn Couch, Shawnee County

**Intergovernmental Cooperation**

Kathy Peckman, Miami County Clerk

*MM Theater*

*Consulate II*

*Consulate III*

9:40 a.m.–10:40 a.m.

**Concurrent Sessions**

**NASA Great Plains Regional Earth Science Applications Center**

Dr. Keven Price, Kansas Applied Remote Sensing

**Crime Analysis**

Carol McCoy, City of Olathe

**Addressing**

Gordon Slater, Approved Technologies Company, Inc.

**Exhibitor Demo—Shafer, Kline & Warren, Inc.**

*MM Theater*

*Consulate II*

*Consulate III*

*Consulate I*

10:45 a.m.

**Brunch with Exhibitors**

*Salon I & II*

12:00 p.m.–1:00 p.m.

**Concurrent Sessions**

**"New" CAMA**

Charlie Sowell, Property Valuation Division

**KSN Weather Lab**

Dave Freeman, KSN News 3

**Global Positioning System**

Steve Thompson, P.E., KSU–Salina

*MM Theater*

*Consulate II*

*Consulate III*

1:15 p.m.–2:15 p.m.

**Concurrent Sessions**

**Intergovernmental Cooperation**

Kathy Peckman, Miami County Clerk

**COGO**

Steve Atchison & Lynn Couch, Shawnee County

**Statewide Aerial Photo Basemap Project**

Rick Miller & Ivan Weichert, Kansas Information Technology Office

**Exhibitor Demo—Data Access & Support Center**

*MM Theater*

*Consulate II*

*Consulate III*

*Consulate I*

2:15 p.m.– 3:00 p.m.

**Ice Cream / Sundae Bar with Exhibitors**

*Salon I & II*



# Sixteenth Annual KAM Conference Schedule

## Tuesday, September 25, 2001

3:00 p.m.—4:00 p.m.

### Concurrent Sessions

**Global Positioning System**

Steve Thompson, P.E., KSU—Salina

*MM Theater*

**Addressing**

Gordon Slater, Approved Technologies Company, Inc.

*Consulate II*

**"New" CAMA**

Charlie Sowell, Property Valuation Division

*Consulate III*

**Exhibitor Demo—MarkHurd**

*Consulate I*

4:15 p.m.—5:15 p.m.

### Concurrent Sessions

**The Kansas Map and Parcel Numbering System**

Melissa Newton-Blume, Property Valuation Division & Scott Tabb

*MM Theater*

**NASA Great Plains Regional Earth Science Applications Center**

Dr. Keven Price, Kansas Applied Remote Sensing

*Consulate I*

**Data, Data, Data**

Ted Payne, City of Olathe

*Consulate III*

8:00 p.m.—Midnight

**KAM Entertainment—Featuring "The Benders"**

Cash Bar

*Salon I, II, III & IV*

## Wednesday, September 26, 2001

9:00 a.m.—10:00 a.m.

### Concurrent Sessions

**Hypertext Markup Language (HTML) and JavaScript Basics**

Chris Welchans, City of Olathe

*MM Theater*

**Data, Data, Data**

Ted Payne, City of Olathe

*Consulate II*

**IAAO Mapping Standards**

Ed Crane, ESRI

*Consulate III*

10:15 a.m.—11:15 a.m.

### Concurrent Sessions

**Crime Analysis**

Carol McCoy, City of Olathe

*MM Theater*

**Section Corner Project**

Steve Thompson, P.E., KSU—Salina

*Consulate II*

**Hoisington Tornado**

Randy Miller—City of Hoisington, Kelly Branum—City of Russell, Bj Wooding—Barton County

*Consulate III*

**Exhibitor Demo—ATCI**

*Consulate I*

11:45 – 2:00 p.m.

### Luncheon

**Steve Thompson, The future of GIS at KSU-Salina**

**Annual Business Meeting**

*Salon I & II*

Sixteenth Annual  
KAM Conference  
A Mapping Odyssey

Announcement of new Executive Board

Swearing in of Executive Board

Grand Prize Drawing



## Session Descriptions

### Addressing

**Gordon Slater, Approved Technologies Company, Inc.**

This session will discuss why it is important to have accurate, comprehensive, and synchronized addresses as a foundation for not only GIS but for many other uses; Complications and problems of not having a good addressing system; Various types of addresses – such as, situs, legal, owner, postal, meters, etc; And steps for beginning the process of building and implementing a “Master Address File” for your organization will be presented. This will include:

- What is the structure of a Master Address Database?

- Who should maintain this important Database?

- Methodologies to inform users of other systems when changes are made to the Master Address File

- How changes made to auxiliary databases, such as CAMA, Tax, Planning & Zoning, Voter, etc can be captured and automatically sent to the Master Address Database

- Integration with legacy systems

- Integration with GIS

- How to utilize USPS addresses

- Implementation Planning

This session will also briefly discuss quality of data, data security, workflow, and hardware infrastructure issues. Additionally, we'll discuss what exciting things organizations that have good address databases in place will be doing in the future.

### COGO

**Steve Atchison & Lynn Couch, Shawnee County**

This session will cover the translation of legal descriptions in a manner that allows the computer to understand and use the information in GIS.

### Crime Analysis

**Carol McCoy, City of Olathe**

Community / problem oriented policing seeks to intervene with crime and other social disorder problems using any number of innovative program approaches. This includes the use of Geographical Information Systems (GIS) to aid in the analysis of crime and other social indicators of crime as they relate to crime prevention and problem solving. Geographic Information Systems represent strong visualization and data integration tools. They provide the functionality to perform anything from automated pin mapping to providing management support for personnel deployment and redistricting. However, many Police Departments are unaware of what GIS is, and how it can help them.

### Data, Data, Data

**Ted Payne, City of Olathe**

Can GIS be used to build a centralized data warehouse? I would argue yes! In fact, organizations should start thinking about how their current business processes can be brought into spatially based GIS database. GIS databases allow organizations to build programs around business processes with the attention to gathering more accurate data on organizational assets. GIS databases also allow for better planning and budgeting of staff priorities. This presentation will demonstrate how the City of Olathe's Utility Maintenance Division has rethought its position on what GIS can provide in preparing our data for a more smoothly run operation.

### Global Positioning System

**Steve Thompson, P.E., KSU–Salina**

We will briefly discuss how the GPS system works, the past and current GPS techniques, equipment, and attainable accuracies, and the future plans for GPS. GPS hardware and software will be at the presentation.

### Hoisington Tornado: Using GIS in Disaster Situations

**Randy Miller, City of Hoisington–Kelly Brantum, City of Russell–Bj Wooding, Barton County** will discuss the

role of GIS in the aftermath of the tornado that destroyed or heavily damaged a third of the City of Hoisington on April 21<sup>st</sup>.

Randy was responsible for getting electrical service restored. Kelly worked with the disaster assessment teams. Bj was producing maps and GIS data to correlate the information needed by everyone working the disaster.



## Session Descriptions *continued*

### **Hypertext Markup Language (HTML) and JavaScript Basics**

**Chris Welchhans, City of Olathe**

This session is intended for ArcIMS users or anyone wanting to post Geographic Information Systems (GIS) data on the World Wide Web. A web page is simply an HTML document. With the right knowledge, anyone with a text editor can create and maintain HTML documents. JavaScript is used to extend the functionality of a website, beyond the limitations of ordinary HTML documents. The session will include examples of HTML elements and JavaScript functions. This session should serve as a starting point for anyone wanting to create or customize a website. We will focus on the code, and will present it in a way that will be easy to understand. No previous programming experience is necessary.

### **IAAO Parcel Mapping Standards 2001**

**Ed Crane, ESRI**

The International Association of Assessing Officers (IAAO) supports its membership by providing courses of study and several professional designations aimed at improving the application of its standards of good practice in property assessment and tax administration. One of these standards that has been used by many states, including Kansas, is the Parcel Mapping Standard which was last updated in 1988. Over the last 2 years, there has been an effort to update and expand this standard to better reflect the current state of the art and provide guidance to jurisdictions wishing to modernize property mapping systems. This presentation will review the new proposed parcel mapping standard and solicit commentary from KAM membership for future updates and expansion of the standard, as well as training classes and designation(s).

### **Intergovernmental Cooperation**

**Kathy Peckman, Miami County Clerk**

The 'infamous' President Bill Clinton touted intergovernmental sharing as a federal priority during his administration. Well - intergovernmental sharing has been a priority of local government for years and it is still going on. But is there more or a better way to share? How does mapping and GIS play a part in this concept? And what does local government get out of sharing with outside or private agencies? With whom should we share? What about privacy issues and open records? Who makes those decisions? I'll share my thoughts on sharing; will you share your ideas of sharing?

### **Kansas Damage Assessment Team**

**Jerry Mallory, Johnson County & Mike Killion, Johnson County AIMS**

The Kansas Damage Assessment Team is a unique group of volunteers who assist the Division of Emergency Management following a disaster. This presentation will focus on an ongoing initiative to use mobile GIS in a rapid damage assessment process, and how Kansas counties can participate.

### **Kansas Map and Parcel Numbering System**

**Melissa Newton-Blume, Property Valuation Division & Scott Tabb**

This session will review the Kansas Map and Parcel numbering system. The purpose of the map/parcel number is to locate a group of parcels in a geographic area. To be cost effective and efficient, a map/parcel numbering system should be simple to use, easy to understand, create a certain degree of uniformity and continuity within a taxing jurisdiction, and easy to manage. We will examine each of the 19 digits and the role they play in meeting these criteria.

### **KSN Weather Lab**

**Dave Freeman, KSN News 3**

Look at mapping data in the modern broadcast meteorology operation.

### **NASA Great Plains Regional Earth Science Applications Center**

**Dr. Kevin Price, Kansas Applied Remote Sensing**

This session will cover the various sensors that NASA has developed for mapping the earth and its various features at varying resolutions. These sensors vary in their sensing resolutions 1 km (continental scale mapping) to 0.5 m (within field mapping resolution).

### **"New" CAMA Presentation**

**Charlie Sowell, Property Valuation Division**

This session will be a review of progress to date on the new CAMA system; the key features of the new system; data conversion and implementation issues; and the system architecture and platform.



## Session Descriptions *continued*

### **Ortho-Corrected Photo Imagery & Parcel Placement**

*Mike Hut & Carl Meinke, MJ Harden & Associates*

This presentation will cover the steps in the process to collect a parcel map from digital orthorectified aerial photographs. It will detail the procedure of heads-up digitizing from these images to create a GIS that is convenient to access and easy to update. The presentation will also detail many of the different types of data that is extracted from the digital ortho imagery including centerline, right of way, parcel/lot subdivision, and annotation. Additionally I will be covering the steps taken during parcel conversion using Registered Ortho Images as the control base for the vector parcel lines. Including Centerline, ROW, Parcel/Lot, Subdivisions, and Annotation.

### **Section Corner Project**

*Steve Thompson, P.E., KSU-Salina*

We will discuss our ongoing project to recover, document, and obtain GPS coordinates for section corners in Saline County, Kansas. We will talk about how we started, what is involved in such a project, the research and investigation to find the corners, the GPS survey, and the resulting GIS database.

### **Statewide Aerial Photo Basemap Project**

*Ivan Weichert & Rick Miller, Kansas Information Technology Office*

The Kansas Information Technology Office, acting in its role as the implementation arm of the Kansas GIS Policy Board, is sponsoring a proposal for the acquisition of an updated statewide Digital Orthophoto 3.75 minute Quarter Quadrangle (DOQQ) coverage, to be collected and processed to one meter ground resolution, Panchromatic (black and white, balanced gray tone) images, registered to the UTM Coordinate System, NAD83 Datum. The deliverable product will meet USGS/NMD/NAPP/NDOP requirements and be able to support development of future USGS standard DOQ products. The scope of this project would include the acquisition of aerial photographic images beginning with the early year 2002 leaf-off period, continuing with subsequent leaf-off periods until full statewide coverage is achieved. Using existing 1991 DOQ products currently on file at the Kansas NSDI Clearinghouse, the Data Access and Support Center (DASC), <http://gisdasc.ksg.ukans.edu>, these images would be re-registered and processed to finished DOQ products and delivered along with the raw imagery data, again to reside at the DASC and made available to the public domain. The cost of this project is expected not to exceed \$1.5 million over a three fiscal year period, to be funded jointly by contributions from KDOT Federal matching funds, Kansas GIS Policy Board, NAPP/USGS, NRCS, USGS/NMD, and other state and local government agencies.

### **TIGER Modernization & Accessing, Using, & Mapping Census 2000 Data**

*Craig Best and John W. Flack, United States Bureau of the Census*

The U.S. Census Bureau's overall mission is to be the preeminent collector and provider of timely, relevant, and quality data about the people and economy of the United States. To accomplish this mission, the Census Bureau has been using the Master Address File and the Topologically Integrated Geographic Encoding and Referencing (MAF/TIGER) System for more than 15 years to support its various census and household survey activities. In addition, information extracted from the MAF/TIGER data base has been used as the foundation of the burgeoning geographic information system (GIS) industry in the United States, as well as to support the analytical programs and GIS activities managed by other federal agencies, numerous state, local and tribal governments, the private sector, and academic organizations.

The MAF/TIGER System is an aging national resource. The Census Bureau needs to prepare for significantly more automation in the 21st Century, including improvements to the positional accuracy of the streets and other map features used to orient field staff; it needs to determine an accurate location for each housing unit; it needs to enhance existing methods for detecting feature changes to provide more timely updates; it needs to modernize the processing environment from "home-grown" systems to a system based on Commercial-Off-the-Shelf (COTS) and GIS software; it needs to expand its geographic partnerships with state, local, and tribal

The US Census Bureau releases vast quantities of data in numerous formats to meet the needs of various users. With changes in technology, and changes in data collection methods, the data released from Census 2000 looks very different from that of 1990. This presentation will focus on the most widely used ways of accessing, using, and mapping Census data. Provide helpful hints and guidance on the use of: the Census Bureau's website, American Factfinder, TIGER, PL 94-171 data, and SF-1 data. Review the basic steps necessary for creating a local thematic map using demographic data from Census 2000 on a Desktop GIS.



# Biographies

## Keynote Speaker

Shelby D. Johnson a native of Madison County, Arkansas received a B.A. in Geography from the University of Arkansas. He spent seven years doing GIS research and working as the community outreach contact for the Center for Advanced Spatial Technologies (CAST) a nationally recognized spatial research organization. Shelby served as Chair of the Arkansas GIS Users Forum in 1996 and 1997 and was instrumental in organizing the State Land Information Board. In 1998 he was appointed to the State Land Information Board by Governor Huckabee and in early 1999 was selected as the State Land Information Coordinator by the Department of Information Systems where he now works under the Direction of Don Melton. In 2000 the Mid-America GIS Consortium honored Shelby with an Individual Achievement Award for advancing geographic information technology. He was selected to participate in the prestigious LeadAR program that grooms outstanding adults in Arkansas for future leadership roles. In his work as the State Land Information Coordinator he is responsible for assisting the State Land Information Board in building a coordinated GIS system to meet the needs of the people of Arkansas.

## Luncheon Speaker

Tom Burgoon is a professional comedian and magician performing for over twenty years in night clubs, comedy clubs, and cruise ships around the world. A creator of magical effects sold across the United States and abroad including Japan, Europe, and South America. A writer and author of numerous books on the art of magic and illusion. A designer of magical effects for trade shows, business meetings, and corporate presentations. An expert close-up entertainer, performing magical miracles under the most impossible conditions.

## Session Speakers

Steve Atchison received his CAD certification from Kaw Valley Vocational School and has been a digitizer for ten years with the Shawnee County mapping department. He has attended the PVD Advanced Mapping Class. Steve has become very proficient with COGO and Arcview and is in charge of the centerline coverage and the 911 maps as well as entering new subdivision plats, parcel splits and combinations. He has created custom maps which are used by several other departments in the county. Recently The City of Topeka and Shawnee County received The Special Achievement in GIS award from ESRI. Steve was part of the team that helped Topeka and Shawnee County to be chosen from more than 60,000 organizations worldwide. In his spare time Steve is teaching himself to program in Avenue and Visual Basic.

Craig Best began working for the United States Bureau of the Census in 1984 updating maps during the initial creation of the TIGER system. Craig was promoted to the mapping and digitizing Project Manager during the 1990 Census overseeing all mapping and digitizing operations in the six state Kansas City Region. Craig was reassigned to the Denver Region in 1991 and managed a variety of post-Census national and regional mapping and digitizing operations. Craig returned to Kansas City where he was promoted to Geographic Coordinator in 1996. As Geographic Coordinator, he managed all Census 2000 geographic programs in the Kansas City Regional Census Center.

Kelly Branum is City inspector and GIS Coordinator for the City of Russell. He was a member of the rapid disasters assessment team that worked the Hoisington tornado.

Ed Crane, ESRI, Kansas. Mr. Crane has worked in and with Kansas local governments since 1973 to modernize assessment and land records systems. He has held numerous local state, and national professional association offices and committee assignments, and is one of the founding members of KAM. He is currently Chairman of the 2002 GIS and CAMA Integration Conference Committee, and sits on the Professional Standards Committee of IAAO now tasked with updating Property Mapping Standards to reflect changing modes of mapping and the new capabilities offered by digital mapping and GIS database technologies.

After 16 years in county government and 10 years in GIS database implementation and consulting, he now focuses on assisting communities implementing Enterprise GIS to share more widely their comprehensive digital databases of images, roads, parcels and administrative boundaries.



## Biographies *continued*

**John W. Flack** received an MA in Geography from Georgia State University in 1993. In Atlanta, he worked with the Gwinnett County GIS Department, and later with the firm, Greenhorne & O'Mara. He has taught Geography courses at Georgia State University, and the University of Kansas. He is currently a Geographer in the Kansas City Regional Census Center, where he has worked on TIGER update operations for the last four years.

**Dave Freeman** is the Chief Meteorologist for KSN News 3 in Wichita, Kansas. He can be seen weeknights at 5PM, 6PM, and 10PM. His weathercasts have the Seal of Approval of both the National Weather Association and the American Meteorological Society. Dave is also Chief Meteorologist for KFDI AM & FM, the dominant radio stations in the Wichita market. Dave holds a certificate in Broadcast Meteorology from Mississippi State University, has taken advanced coursework from MSU, and has undergone special training in NEXRAD Doppler Radar by the company that builds the NEXRAD Radars. Dave was named TV Broadcaster of the Year for 1992 by the NWA, and is a member of the governing Council of the NWA. He is also a past national Broadcast Meteorology Chairman of the National Weather Association. Dave and the famous KFDI mobile news units were recently honored with the 1999 Kansas Association of Broadcasters Award for Best Radio In-Depth Reporting for coverage of the May 3, 1999, tornado that struck Wichita and south-central Kansas.

**Mike Hut** has over 16 years of surveying and mapping operational experience and is responsible for the general operations of the Photogrammetry Division. As the Director of Operations and Technology his main focus is to oversee the Field Survey, Photo Lab, Mapping Services and Application Development Departments. Responsibilities include the management, research and implementation of leading edge technology for softcopy photogrammetry into everyday production. He also supports software application development efforts by providing guidance for innovative software enhancement and tools to all divisions at MJH. Mr. Hut is the Facility Security Officer for M.J. Harden Associates and maintains an active DOD Secret Clearance.

**Mike Killion**, a Salina native, is GIS Lead Developer with the Automated Information Mapping System (AIMS) of Johnson County. Before joining AIMS, he was GIS Coordinator for the Iowa Emergency Management Division.

**Jerry Mallory** is the Building Code Official for Johnson County, and head of the Kansas Damage Assessment Team.

**Carol McCoy** is currently the GIS Manager for Olathe, Kansas. She began her career in Law Enforcement when she enlisted in the US Army as a Military Police Officer. After attaining the rank of Sergeant, she opted to return to civilian life and pursue a career as a Police Officer. After spending eight years as an officer, she was offered the opportunity to co-create the Overland Park Crime Analysis Unit. She went on to introduce Crime Analysis to the Lenexa Police Department before beginning her current tenure as GIS Manager for the City of Olathe.

**Carl Meinke** joined M. J. Harden, Associates, as a Graphic Technician in 1996. Currently, as a Production Manager for the Government/Utilities Division, Carl ensures that the production staff is kept on task and working toward the completion of their respective projects. He has been involved in numerous Projects utilizing Bentley's MicroStation, ESRI's ArcInfo and ArcView, and AutoDesk's AutoCAD Software's. Most recently he performed Parcel Conversion for Clinton County, MO using MicroStation, ArcInfo, and ArcView products. Other types of work include Centerline updates using a combination of MicroStation and Intergraph's MGE, as well as Electrical Transmission and Service mapping utilizing AutoCAD and ArcInfo 8.1 software. Carl has taken on Quality Control responsibilities in several projects in order to ensure the integrity and consistency of data produced by multiple technicians.

**Randy Miller** is the Electric Distribution Superintendent for the City of Hoisington.

**Richard (Rick) Miller** serves as Director of the Kansas Information Technology Office and Kansas Geographic Information Systems (GIS) Director. Prior to joining Kansas government, Rick worked for the United States Census Bureau as a Supervisory Geographer. He has worked in state government for the past 10 years. His previous experience in Kansas government includes that of GIS Coordinator for Kansas Department of Health and Environment (KDHE) (1991-1995), Chief, Systems Management Section for KDHE (1992-1995), and as State GIS Coordinator with the Kansas Water Office (1995-1999) prior to joining the Department of Administration in 1999. Rick represents the GIS community on the state's Information Technology Advisory Board and is President of the National States Geographic Information Council (NSGIC). He holds a B.S. in Education and M.A. in Geography, both from the University of Kansas.

Sixteenth Annual  
KAM Conference  
A Mapping Odyssey



## Biographies *continued*

Melissa Newton-Blume PKM RMA is a Cartographer with the Kansas Department of Revenue, Division of Property Valuation. She co-teaches numerous mapping classes for the Division and is currently involved with implementing GIS at the Department of Revenue. Prior to the position at PVD, Melissa was the Deputy Appraiser and County Cartographer for Jefferson County, Kansas. She worked for the Shawnee County Appraisers office throughout the statewide re-appraisal process and has 13 years experience in the Title Industry. Melissa serves as the Kansas Association of Mappers Designation Committee Chair and is a director on the KAM Board.

Dr. Kevin P. Price is an Associate Professor of Geography and the Associate Director of the KARS Program at the University of Kansas. Dr. Price has 17 years of remote sensing/GIS training and research experience based on disciplinary foundations in geography and rangeland ecology. He provided leadership for the research that resulted in the development of the GreenReport®. His research interests are in biogeography, landscape ecology, and agro- and natural ecosystems monitoring and modeling using remotely sensed measurements and geographic information systems (GIS). His past research includes studies in crop monitoring and modeling, plant community ecology, biodiversity, grassland productivity, land use discrimination, soil erosion modeling in pinyon-juniper woodlands and agricultural environments, sage grouse and ring necked pheasant habitat modeling, agricultural crop monitoring and modeling, and development of probability models for predicting patterns of noxious weed invasion. He is currently working on projects in the U.S., China, Mexico, El Salvador, and Zambia.

Ted Payne has a BA in Political Science, an MA in Communications, and an MA in Geography from Kansas State University. While at Kansas State during the Geography degree from 1996 through 1999, I focused on environmental GIS with an emphasis on environmental modeling. Upon graduation, I began working for the Unified Government of Wyandotte County Kansas City, Kansas in the Appraisers Office where I focused on statistical analyses and GIS. I am currently with the City of Olathe in the Utilities Maintenance Division where I am focusing on centralizing all Municipal Services data for work order management purposes as well as distribution services. These task are being performed in the ArcView GIS 3.2a environment with plans of utilizing SDE, IMS, and 8.1 in the very near future.

Kathy Peckman has been the Clerk of Miami County since 1993. Mrs. Peckman has taught at Wichita State University's Clerks' Certification School and has spoken at statewide meetings of the Kansas County Commissioners' Association and the Kansas County Clerks' and Election Officials Association. She was appointed by Governor Bill Graves to his GIS Policy Board in 1996 and worked on the State Information Management Plan during that tenure; elected chairman of the Miami County Intergovernmental Council in 1999 and continues on its executive board, appointed to the Kansas Association of Counties Executive Council in 2000, appointed by Secretary of State Ron Thornburgh for his Election Standards Task Force in 2001. Her background includes eight years as a telecommunications analyst for a national network involving a major department store chain, eight major oil companies, jewelry stores, specialty stores, and a bank depository for the top four major credit card companies. She has been a real estate agent and worked in various capacities in insurance, construction, utilities, city government, and the medical field.

Gordon Slater is owner of ATCi, a software firm that specializes in integration of address files throughout an organization. He has been actively involved with Kansas county and city governments since the early 1980's providing and implementing a variety of software solutions. Gordon has worked with many local government offices across the state and is familiar with the complicated issues involved with address management.

Charlie Sowell has been in the mass appraisal profession for 21 years. He has a degree in Real Estate Appraisal and joined the Property Valuation Division (PVD) of the Kansas Department of Revenue in 1986. He has been involved with the Kansas Computer Assisted Mass Appraisal (KSCAMA) system in various capacities since that time and became manager of the KSCAMA section in 1994. Currently Charlie serves as Project Manager for the acquisition of the New CAMA system.

Scott Tabb PKM has worked in county and state government since 1987 when he started with the Cass County Missouri Assessor's office. After moving to Kansas in 1989, he worked in Douglas County and then the Kansas Department of Revenue, Division of Property Valuation. While working for the Division of Property Valuation, he taught numerous mapping courses. Scott is a past president of the Kansas Association of Mappers (KAM).



## Biographies *continued*

Steve Thompson, P.E. earned a Bachelor's Degree in Civil Engineering at KSU in 1972. He has been a licensed Professional Engineer since 1976. Steve was a design engineer and project engineer for Wilson and Company in Salina from 1972 to 1982 and helped design several highway segments in Kansas, military roads in Saudi Arabia and an airfield in Egypt. In addition to engineering, Steve wrote and maintained most of the civil engineering computer software used at Wilson and Company at that time.


In August of 1982 Steve began teaching at Kansas Technical Institute (now KSU-Salina). Initially he taught Computer Science then both Computer Science and Civil Engineering Technology. In 1990 Steve received a grant from the National Science Foundation to begin an associate degree Geographic Information System(GIS) and Global Positioning Systems(GPS) program at KSU-Salina (the first associate degree GIS/GPS program in the nation). In 1990 Steve also installed the first GPS Base Station for the State of Kansas at KSU-Salina and began providing GPS/GIS technical support to local, state, and federal agencies in Kansas. From 1991 to 1994 Steve was Department Head for Civil Engineering Technology. Since that time Steve has spent most of his time administering the GIS/GPS program, teaching classes, assisting students, conducting research and making presentations related to GPS and GIS.

Steve is a member of the Kansas Society of Professional Engineers, the National Society of Professional Engineers, the Kansas Society of Land Surveyors (KSLS), and the American Congress on Surveying and Mapping (ACSM). Steve is also the faculty advisor for the student chapter of KSLS/ACSM.

Ivan Weichert serves as Kansas Geographic Information Systems (GIS) Coordinator. He has worked in Kansas government for the past 8 years, 3 with the State of Kansas and 5 with Shawnee County. He previously worked with the GIS Unit at the Kansas Department of Health and Environment, as Interim Director of Information Technology for Shawnee County and as Chairman of the GIS Policy Board while serving as Zoning Administrator for Shawnee County. Ivan represents the GIS community on several local, state, and regional committees as well as being a member of the National States Geographic Information Council (NSGIC).

Chris Welchhans has worked with Geographic Information Systems (GIS) technology for more than four years. He has spent the last two years programming Internet and Windows-based GIS applications. Chris has worked in the public and private sectors, and is currently employed by the City of Olathe as a GIS programmer.

Bettejane Wooding CMS PKM - Bj has been the Cartographer for the Barton County Appraiser's Office since 1990. She is a past president of KAM and has achieved the PKM designation. Bj is also a member of IAAO, ACSM, and URISA, and has achieved the CMS designation from the IAAO. She worked on the Kansas GIS Standards Task Force and is currently serving on the Kansas GIS Policy Board




**SAVE THIS DATE**

**2002 MidAmerica GIS Symposium**

April 14-18, 2002

Hyatt Regency Crown Center  
Kansas City, Missouri

For more information visit <http://magicweb.kgs.ukans.edu>









## **KANSAS ASSOCIATION OF MAPPERS**

### **GRAND PRIZE DRAWING—DVD PLAYER**

**Wednesday, September 26<sup>th</sup>**

**Luncheon/Business Meeting**

**Must be present to win**

**NAME** \_\_\_\_\_

**ORGANIZATION** \_\_\_\_\_

One signature from each exhibitor is required. Please do not interrupt the vendors to obtain a signature.

DASC \_\_\_\_\_

Drexel Technologies, Inc. \_\_\_\_\_

ESRI \_\_\_\_\_

GISEdge, Inc. \_\_\_\_\_

Kucera International \_\_\_\_\_

MarkHurd \_\_\_\_\_

Mid-Kan Blueline \_\_\_\_\_

Midland GIS Solutions \_\_\_\_\_

M.J. Harden Associates, Inc. \_\_\_\_\_

PMC Pro-Map \_\_\_\_\_

R & S Digital \_\_\_\_\_

Shafer, Kline & Warren, Inc. \_\_\_\_\_

Walker Associates \_\_\_\_\_

Horizons, Inc. \_\_\_\_\_

KBP Reprographics \_\_\_\_\_

Premier Data Services \_\_\_\_\_

When completed, place in the Grand Prize Drawing Box located on the Registration Table.