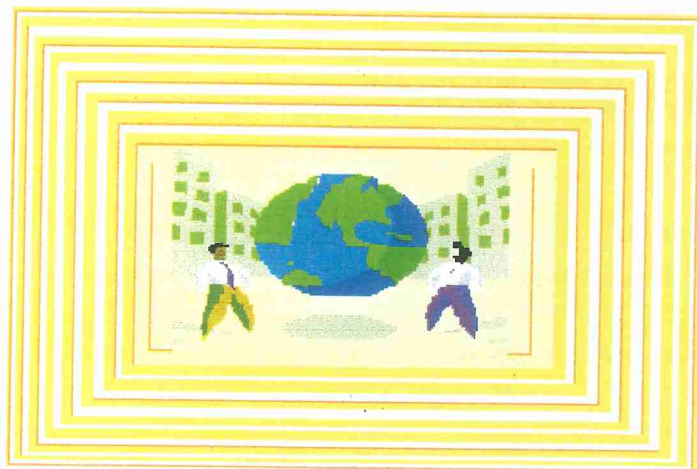


Twenty-First Annual KAM Conference Program

Bringing Communities



of Mappers Together

Kansas Association of Mappers
October 2 - October 5, 2006
Wichita Airport Hilton, Wichita, KS

21st Annual KAM Conference Vendors



MARKHURD



A Subsidiary of Wheatland Electric



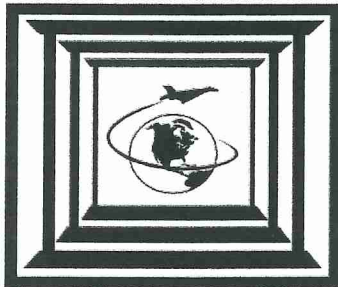
ESRI

R&S Digital

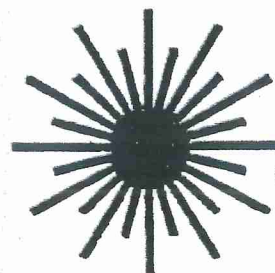
A Full Service GIS Mapping Company



Kucera International Inc.



Your Window to the World



LASER SPECIALISTS, INC.

**GPS/GIS - Lasers - Range Finders
Sales - Service - Rental**

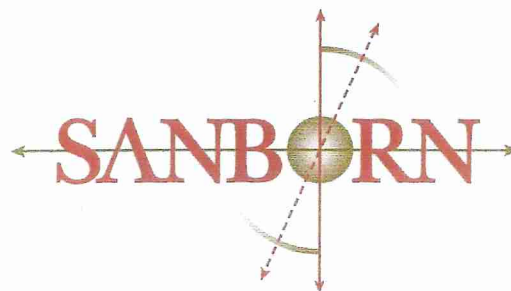


Table of Contents

President's Welcome Letter.....	1
Announcements.....	2
Keynote Speaker Biographies.....	4
Conference Schedule.....	5
Session Descriptions.....	8
KAM Executive Board Candidates.....	13
Hotel Map.....	Back cover



Welcome

Once again we meet in Wichita. This year seems to have gone by very fast. The Program Committee Co-Chairs, Melissa Newton-Blume and Ed Crane and their committee have been working very hard. This year we wanted to make some changes to better address the educational needs of our members. I think they did it. The sessions are very diverse and should be a great experience for all.

Don't forget the vendors! Without them we wouldn't be able to do as much every year. There are plenty of opportunities to mix with the vendors throughout the next few days. Stop by, check out their stuff, and at least say HI.

Last but by no means least, HAVE FUN.



Barbara Scott, KM
2006 KAM President

From the Program Committee Chairs

Welcome to the 21st Annual KAM conference! So far it looks like a big success. We've exceeded the expected number of registrants, sold out the hotel room block and have a wide range of educational offerings ready for you to partake. As I flip through the list of conference registrants, I see that we have folks coming from all over the state, a few other states as well, and from many different disciplines—City and County Cartographers/GIS professionals, Appraisers, Surveyors, Electric and Water Utility mappers, several State Agency GIS staff, Zoning Administrators, and on and on. There are a lot of different types of mappers in our Kansas communities and we've tried to make this a conference that provides educational support to all of them.

It's actually been quite a ride getting here. It began with President Barb Scott and the KAM Board of Directors early insistence that we grow the mapping education offerings deeper and wider for our expanding audience. Through the last year many new communities have begun digital mapping and GIS, hundreds of people attended GIS Outreach Seminars supported by DASC and the GIS Policy Board, and many of our members have moved to new positions around the state.

We would like to extend a very special thank you to the Program Committee and to those who helped to put this year's program together. Brenda Krause, Dan Oldehoeft, Bruce Hardesty, Sandra Drake all met early on in Manhattan and worked hard to produce the outline for the educational content. Sandra also volunteered to take care of the Map Gallery. Bruce, with help from Randy Mayden, took care of organizing the exhibitors. Bruce also made arrangements for the Party Bus and the Pool Tournament. Dan was very helpful in working out details with the hotel and going on quests to find a band. We ended up hiring Shawn Ward from Topeka, who is very talented and versatile and I think you will completely enjoy listening and dancing to him and his band Straight Shot this Tuesday evening. Mark Dinkel and George Donatello were just a phone call away to pitch in wherever we needed them. And of course, Barb Scott was there for us, to bounce ideas off, provide morale support and to nudge us along.

A big Thank You also to Penne Roelfs, the new KAM administrative assistant. This is Penne's first KAM Conference in that role but certainly not her first KAM Conference. She has been a big help in taking care of the registration, this program document, and many last minute details.

Continued on next page

Ken Wilkerson generously donated his time for the pre-conference workshop on Model Builder. We are privileged to have such a knowledgeable and delightful instructor eager to help out. Thanks Ken! Ken was also instrumental in how we came to feel strongly that we needed the Kansas Homeland Security Director, Adjutant General Tod Bunting to Keynote this year's conference. Ken Wilkerson developed and taught Emergency Managers across the state, a series of two-day GIS classes last spring that emphasized the value of existing cartographic data at the local and state level in supporting emergency response and mitigation.

The program is arranged a little different this year. Instead of separating into many breakout sessions on Tuesday afternoon following lunch, we will break into just two Super Sessions. We found that some topics appeal to a larger group, and this way we didn't have to ask presenters to present on the same topic several times. There will be multiple breakout sessions Wednesday and again Thursday morning on a wide variety of topics to keep you busy!

We also want to thank all of the members who take time out of their very busy schedules to make presentations at this conference. Without them – there wouldn't be a conference. Mark Dinkle has been working hard to present the GIS startup sessions among others. Dr. Stephen Brown is enthusiastic about sharing his knowledge of GPS, Geocaching and Mapping a Mountain with us. The DASC group is always willing to share their infinite wisdom with our group. Many others have stepped up and donated their time so that we can all learn and improve ourselves. Take advantage of this opportunity and by all means, Enjoy the KAM Conference!

Melissa Newton-Blume, PKM
Ed Crane, KM
Program Committee Co-Chairs

Continuing Education

Continuing Education points will be available for participants attending the various educational sessions. If you need maintenance points for your KM, PKM, KGISP, RMA, or to give to your employer, please pick up a sheet at the registration table. Have the moderator in the room stamp your sheet for the session you attended. Provide a copy to Penne Roelfs, the KAM Administrative Assistant, for KM, PKM, or KGISP maintenance points. Provide a copy to PVD (Marilyn Cathey) for RMA points. All sessions at the conference will count for KM, PKM, and KGISP maintenance points and will be tracked in a database. Contact Penne Roelfs at KAM_admin@earthlink.net if you have questions or require confirmation on your continuing education points.

Vendor Night

Come early and plan to stay at the Tuesday night vendor reception. Plan to fill up at the Fajita Bar. KAM will provide beer and soda. A cash bar will also be available. Please take time to talk to the vendors and learn about all the new technology that will make our jobs more efficient and effective. The vendors are a very important part of the conference, so make sure when you are visiting their booths to thank them for coming and sponsoring KAM. Additionally, many vendors have door prizes. Check your registration packet for a paper to take to the vendors for their signatures. This paper will be your registration for the door prize drawings starting at 7:30 P.M.

5:00 pm Vendor Exhibits open.

6:00 pm Fajitas buffet.

7:30 pm Drawings for door prizes.

8:00 pm Move to the "Emerald Ballroom" as the band will be starting.

** The Tower Room will be open for KAM members after the dance.

Map Gallery

The Map Gallery gets better every year. You will find a ballot in your registration bag to place your vote for the best map. Look the maps over well because the prizes have created some stiff competition. ESRI and KAM have donated some great prizes. Top prize this year is a certificate for (1) complimentary single use license for ESRI ArcView 9.2. Another prize is a free registration to next year's KAM conference. Take your time to judge the maps and learn from them. Then place your vote in the box provided. The Map Gallery is located in Salons I & II.

Lunch Thursday (rsvp required)

You will receive two "meal tickets" in your conference packet for the lunch on Thursday. If you plan to attend the lunch, you **MUST** turn in one ticket with your name at the registration desk by Tuesday noon and bring the remaining ticket to the lunch for the grand prize drawing.

Party Bus and Pool Tournament in Old Town

You don't want to miss a new treat for KAM attendees—The Party Bus! **What is the Party Bus—you ask??** The Party Bus is equipped with a CD/ MP3 player and sound system that plays throughout the whole bus. Two buses have air conditioning and all buses have rope lighting, LED ground effect lighting, laser lighting, tinted windows, and last but not least a VERY fun driver. Better than a Limo, a Party Bus can safely seat 22-40 guests. Besides, where else can you be seen in an old school bus with a beer in your hand? Pickups will start with 2 buses that run for an hour, then one bus will make round-trips between a specified stop in Old Town and the Airport Hilton till 11PM. You'll get more details on the bus ride—**DON'T MISS THE PARTY BUS!** Some people have been known to just ride back and forth all evening it's such a HOOT!



POOL TOURNAMENT at Emerson Biggens Bar and Grill



Sign up at registration for the tournament, and be sure to catch one of the first Party Bus rides out to Old Town. Play begins at 7 on two tables in a Party Room reserved for KAM. It's \$5 per team to sign up, and there will be cash prizes for several of the finalists. Contact Tournament Director Bruce Hardesty for any other details.

Grand Prize

On the final day of the conference, the committee thought it would be appropriate to give away a GPS receiver as the Grand prize for the 21st Annual KAM Conference. Some lucky person will be leaving the conference with a really cool toy and no excuse to get lost on the way home! But you are only eligible to win if you stay and attend the lunch and meeting on Thursday. The drawing will be held following the close of the business meeting.
YOU MUST BE PRESENT TO WIN!



Keynote Speaker

MAJOR GENERAL TOD M. BUNTING

Major General Tod M. Bunting became The Adjutant General of Kansas on January 5, 2004.

As the Adjutant General, Major General Bunting oversees the activities of the Adjutant General's Department. This includes providing personnel administration and training guidance for over 7,700 soldiers and airmen in the Kansas Army and Air National Guard. As the Director of Kansas Emergency Management, a division of the Department, he is guiding a small professional core of personnel that prepare for and respond to disasters. Major

where he works to ensure security in the state is a top priority.

A native of Wichita, Major General Bunting graduated with a Bachelor of Arts in Political Science from Washburn University, Topeka. He was commissioned as a distinguished graduate of the Air National Guard Academy of Military Science in 1979 and has served in a variety of positions at all levels of the Air National Guard.

Special Presentations

A.J. Thomas, Manager, KDHE Geo-Spatial Services.

A native Kansas, A.J. Thomas, acquired a undergraduate degree in Environmental Studies and Communications from the University of Colorado-Colorado Springs and followed that up with a Masters degree, focused on Geographic Information Systems from the University of Kansas.

While at KU, A.J. managed GIS projects for the Geographic Research and Analysis Information Laboratory (GRAIL). In 1995, A.J. joined the geographic information technology section of the Kansas Department of Health and Environment, and soon thereafter accepted the management position for GeoSpatial Services housed in the Information Technology section under the Office of the Secretary. Major interests include the adaptation of geospatial technology in business processes at KDHE, the promotion of geospatial educational, and the integration of geospatial efforts among governmental units.

Dr. Steve Brown, K-State Research & Extension Director, BrownCounty.

Dr. Steve Brown is the K-State Research and Extension director for Brown County, Kansas and is a graduate professor at K-State University.

He has a Ph.D. in Environmental Science from the State University of New York and started the country's first 4-H project in GIS and GPS at Cornell University.



21st Annual K.A.M Conference Schedule

Monday, October 2, 2006

1:00 - 5:00

ArcGIS Model Building Class

Consulate I

Tuesday, October 3, 2006

8:00 - 10:00

Conference Registration

**Pre-Function
Space**

10:00 - 12:00

Presidential Welcome—Barbara Scott

**Presidential
Ballroom**

Keynote Presentation:

Maj. Gen. Tod Bunting, Kansas Adjutant General
Working Together to Protect Kansas Communities

Special Presentation: *kdheks.gov*

A.J. Thomas, KDHE GeoSpatial Services Manger
Leveraging GIS for Public Service at KDHE

KAM Annual Business Meeting
Selected Committee Reports

12:00 - 1:45

Lunch / KAM Business Meeting
Committee Reports (continued)

Salon III & 1V

Special Presentation:

Dr. Stephen Brown
Mapping the Mountain

2:00 - 3:15

"Super Sessions"

GeoCaching—Real World Gaming for Mappers!
Dr. Stephen Brown

Consulate I

Homeland Security Panel—What can you do now?

Consulate II

3:15—3:30

Exhibits Open! Refreshment Break

Salon I & II

3:30 - 4:30

Special General Session

*"Building Better Road Maps and Databases for Counties:
Lessons Learned on the Front Lines"*

Bruce Schneider, R&S Digital, Great Bend

'Pappy' Lies, Emergency Manager, Logan & Gove Counties

Consulate II & III

5:00 8:00

KAM Exhibitors Welcome Reception

Salon I & II

8:00 - 11:00

KAM Social & Dance

Straight Shot featuring Shawn Ward

Salon III & IV

**** The Tower Room will be open for KAM members after the dance.**

21st Annual K.A.M Conference Schedule

Wednesday, October 4, 2006

8:00 -9:00

Continental Breakfast in Exhibit Hall

Salon I & II

Five educational themes are designated as follows:

- | | |
|----------------|--|
| Track 1 | Classic KAM — Assessment Parcel Mapping |
| Track 2 | Emergency Management and Utility Mapping/GIS |
| Track 3 | Spotlight on City/County GIS Best Practices |
| Track 4 | Technical and Professional Skills Development |
| Track 5 | Roads and Address Databases for GIS |

9:00 - 10:00

Sessions

- | | | |
|----------------|--|----------------------|
| Track 1 | Fundamentals of Ownership Property Mapping | Consulate I |
| Track 2 | Supporting Police & Public Safety GIS Applications | Consulate II |
| Track 3 | Strategies for Sharing & Collaboration in GIS-Panel | Consulate III |
| Track 4 | New/Improved Image Database Options for GIS | Salon III |
| Track 5 | Power of the Point | Salon IV |

10:00—10:30

Break with the Exhibitors

Salon I & II

10:30—11:30

Sessions

- | | | |
|----------------|---|----------------------|
| Track 1 | Title Triumph, the game of Land Title Knowledge | Consulate I |
| Track 2 | KDEM & Disaster GIS-Local Roles/Responsibilities | Consulate II |
| Track 3 | Spotlight on Emporia/Lyon County GIS Applications | Consulate III |
| Track 4 | Presentation Skills for the Technical Professional | Salon III |
| Track 5 | GIS Startup Workshop #1 | Salon IV |

12:00—1:00

Exhibitors Showcase (Box Lunch)

Salon I & II

1:00—2:00

Sessions

- | | | |
|----------------|---|----------------------|
| Track 1 | Interesting/Unusual Property Mapping Issues | Consulate I |
| Track 2 | Water/Waste Water GIS Applications | Consulate II |
| Track 3 | Spotlight on Garden City & Ottawa GIS Applications | Consulate III |
| Track 4 | Kansas Community Commons & DASC Indicatives | Salon III |
| Track 5 | GIS Startup Workshop #2 | Salon IV |

2:00—2:15 Break with the Exhibitors

Salon I & II

21st Annual K.A.M. Conference Schedule

2:15—3:15

Sessions

- Track 1** Cartography Tools and Techniques for GIS
- Track 2** Rural/Municipal Electric Mapping/GIS
- Track 3** Spotlight on Lawrence GIS Applications
- Track 4** GIS Integration with HAVA, CAMA, and TAX
- Track 5** Roads and Address Mapping Roundtable

Consulate I
Consulate II
Consulate III
Salon III
Salon IV

3:30—4:30

Sessions

- Track 1** Soils and Ag Assessment—New Methods & Data
- Track 2** Rural Electric & Rural Water Mapping/GIS TAC Roundtable
- Track 3** Hosting/Web Services-Architectures & Applications
- Track 4** GIS Management & Next Steps Q & A
- Track 5** Supporting 911/Dispatch & Emergency Response GIS

Consulate I
Consulate II
Consulate III
Salon III
Salon IV

5:00—6:00

Past President Reception

Presidential Suite

6:30—11:00

**Evening at Old Town Including Pool Tournament
 Featuring the infamous PARTY BUS!**

Thursday, October 5, 2006

8:00—9:00

Pastries & Coffee

Lobby Area

9:00—10:00

Sessions

- Track 1** Cool Stuff in ORION for Mappers
- Track 2** CAD/GIS Integration I
- Track 3** Enterprise GIS Transitions and Expectations

Consulate I
Consulate II
Consulate III

10:15—11:15

Sessions

- Track 1** National Pin Initiative and National Parcel Standards
- Track 2** CAD/GIS Integration II (continued)
- Track 3** Enterprise GIS Roundtable

Consulate I
Consulate II
Consulate III

11:45—1:00

KAM General Session and Buffet Luncheon

Presidential Ballroom

Annual Business Meeting Resumes
 Swearing in of Executive Board
 Announce Map Gallery Winners
 Closing Business Session
 Grand Prize Drawing

The conference is over, have a safe drive home.

Session Descriptions

GeoCaching—Real World Gaming for Mappers

Catch the newest rage in the use of consumer-grade GIS receivers! If you haven't been on a GeoCaching expedition, you're in for a real treat for both you and kids in the neighborhood. These modern-day treasure hunts are a world wide phenomenon with hundreds of locations in Kansas for you to search for and check off your list! Learn how easy, and how difficult this can be—there are tricks and tricksters in this game, so take notes from this veteran GeoCacher.

Dr. Steve Brown, Brown County Extension Office

Homeland Security Panel—What Can You Do Now?

Every County has an Emergency Manager, many of whom have gone through introductory GIS sessions, and several that have taken hands-on GIS Training last spring. Sit with staff from KDEM, The Adjutant General, and the Trainer of these important members of your community to ask questions and learn how to better meet their unique mapping and data needs.

Maj. Gen. Tod Bunting, Adjutant General, Topeka

Jessica Frye, KDEM/Adjutant General's Office, Topeka

Ken Wilkerson, GIS Edge, Wichita

Building Better Road Maps and Databases for Counties—Lessons Learned on the Front Lines

People have been constructing digital maps of roads for many years, and there are a number of methods to go about that process. Some of the existing data and some of the old techniques don't meet the growing needs of a wider community of users. Hear from experienced travelers down this road, what they've learned through the school of hard knocks.

Bruce Schneider, R&S Digital, Great Bend

'Pappy' Lies, Emergency Manager, Logan & Gove Counties

Fundamentals of Ownership Property Mapping

Judy Palenski, Saline County GIS

This session is for beginning cartographers or GIS professionals who would like to know the basics of property ownership mapping. The session will cover the interesting history of the creation of land descriptions and how it applies to Kansas. The assessment system maintenance will be discussed including some basics on Source Documents and Source Document Retrieval. This session will show how good cartography and GIS maintenance are essential for the appraiser's office.

Supporting Police and Public Safety GIS Applications

Mike Kollmeyer, City of Wichita

Dan Connolly, City of Derby

Hear how real beat cops are using maps to plan/deploy/analyze more efficiently. From merely using traditional paper plots & maps to interactive web apps—learn what works and what doesn't!

Strategies for Sharing and Collaboration in GIS

Steve Thompson, GIS/GPS Consultant, Salina

Six north central counties are trying hard to work together as they initiate GIS projects. Hear how they're going through the process, planning implementation, and their prospects for staying together, standardizing data, and sharing their GIS expertise.

① Susan Schulte ~~Scha~~ Schulte

New / Improved Image Database Options for GIS

Bob Williams, Sandborn Mapping

LIDAR, Digital Cameras, GoogleEarth, Oblique Imagery, etc. and You.

Power of The Point!

Russell Gibson, Morrison-Shipley Engineers, Ft Smith, AR

Get 'The Point' & a few administrative boundaries and you are off and running with exceptionally productive and useful GIS applications literally everyone in the community can use!

Title Triumph, The Game of Land Title Knowledge

Scott Tabb, Management Inc. Olathe

Test your understanding of Kansas legal title law using a fun question & answer board game developed by the American Land Title Association for land title professionals. This employee training tool is a great vehicle for team building and a fun, effective reinforcement of industry knowledge.

KDEM & Disaster GIS—Local Roles / Responsibilities

Jessica Rose, KDEM, Topeka

Chris Welchans, City of Olathe,

Ken Wilkerson, GIS Edge, Wichita

How to talk to, understand, teach & learn from Emergency Managers, and what is really needed to support your local Emergency Management organization. Be ready BEFORE bad things happen!

Spotlight on Emporia / Lyon County GIS Applications

Becky Samuelson, City of Emporia/Lyon County GIS Manager

Gary Post, Lyon County Appraiser

The City of Emporia and Lyon County share a GIS Manager. Hear how that situation works and the value of sharing not only expertise, but also technology, data, and applications.

Presentation Skills for the Technical Presenter

George Donatello, TEAM Consulting, Liberty, MO

Ed Crane, ESRI Kansas City

No Fear Presentations – Ideas, Tips, and Tricks to get you by and make a good impression when you speak, no matter what the situation!

GIS Startup Workshop #1

Mark Dinkel, Wheatland Electric, Garden City, KS

All the basics tools and directions and data for building and maintaining road centerlines and address points in your county.

Interesting / Unusual Property Mapping Issues and Answers

Melissa Newton-Blume, KS Dept of Revenue/Property Valuation Division, Topeka

You wouldn't believe the questions that come up during the year about property and ownership! Hear some of the more interesting dilemmas and the thought process in solving these often one-of-a-kind situations.

Water / Wastewater GIS Applications

Kyle Tjelmeland, City of Topeka GIS

Pete Koenig, KRWA

Water facilities mapping seems so easy, but there's a lot to making sure it's all mapped precisely, completely, and making sure the right information about these facilities—valves, pipes, fittings, history—is properly maintained.

Session Descriptions

Spotlight on Garden City and Ottawa GIS Applications

Andrew Mead, Garden City/Finney County GIS

Darlene Lister, Ottawa GIS Manager

Hear from two veteran mappers on how they approach Municipal Electric System mapping, and all the other interesting work they're asked to do!

Kansas Community Commons and DASC Initiatives

Eileen Battles, Amber Reynolds, Nick Callaghan, Brent Miller, Mike Killion, John Dunham — Kansas Data Access and Support Center, Lawrence

MUST KNOW information about YOUR data and all the new projects DASC gurus are working on for YOU and your state agencies and communities.

GIS Startup Workshop # 2

Mark Dinkel, Wheatland Electric, Garden City, KS

Building and Maintaining PLSS, administrative boundaries, and tax units.

Cartography Tools and Techniques for GIS

Jeff McReynolds/Stacey Priest, ESRI Kansas City

Cartography tools and techniques are getting better and better. Learn new tricks to make that 'perfect' map and wow your friends and co-workers.

Rural & Municipal Electric Mapping/GIS

Jeff McReynolds, ESRI Kansas City

Mark Dinkel, Wheatland Electric Cooperative, Garden City

Gregg Noland, Westar Energy, Topeka

Hear from industry experts how to understand and use object models, rule-based mapping and database structures for GIS with specific emphasis on the complexity of electric utility GIS.

Spotlight on Lawrence GIS Applications

Bryce Hirschman, GIS Manager, City of Lawrence

Learn how the City of Lawrence is bringing GIS to many departments at once, especially how the GIS organization works with the Surveying, Utilities and Engineering applications.

GIS Integration with HAVA, CAMA, and TAX

Travis Rozean & Evan Phannenstiel, Infinitec, Hays,

Beau Dealy, Dealy Geomatics, Wichita

Putting GIS and Maps into each of these critical applications is the new rage! Learn how it's done, how it has worked, and what to expect in the future for GIS Integration into many new offices' daily work.

Roads and Address Mapping Roundtable

Amber Reynolds, DASC, Lawrence

Bruce Schneider, R&S Digital, Great Bend

Nancy Mattson, KDOT, Topeka

Russell Gibson, Morrison & Shipley Engineers, Ft Smith, AR

Tom Shaffer, FHSU, Hays

Hard truths about what's out there now, what it takes to do it right, and what's planned next in the way of statewide standards and support for a comprehensive, complete and current digital road map of Kansas.

Session Descriptions

Soils and Ag Assessments—New Methods and Data

Susan Williams, KS Dept of Revenue—PVD

Zoe Gehr, KS Department of Revenue—PVD

Digital soil surveys are here. The old books are being replaced by the certified digital files known as the Soil Survey Geographic (SSURGO) Database. Come to this session to learn about the changes in soil survey information, and how best to migrate from the soil survey books to the SSURGO database. Topics will include discussion for counties using manual mylar mapping, as well as counties who are using digital mapping with a GIS.

Rural Electric and Rural Water Mapping/GIS – TAC Roundtable

Moderator: Mark Dinkel, Wheatland Electric, Garden City

Phillip Shelly, Wheatland Electric Coop, Garden City

Gregg Noland, Westar Energy, Topeka

Jeff McReynolds, ESRI, Leawood

Tyler Remmert, Prairie Land Electric Coop, Norton

Pete Koenig, Kansas Rural Water Association, Seneca

With the GIS Policy Board forming several Database Planning Committees to address potential standards for Kansas, it's important to understand how different utilities are approaching digital databases, and how to assure that these projects are compatible and sustainable. Both a Water Resources group and an Energy group have been formed to gather input from subject matter.

Hosting and Web Services – Architectures & Applications

Amber Reynolds, DASC, Lawrence, KS

Travis Rozean, Infinitec, Hays KS

Many organizations are finding that 'owning' staff and technology can be too expensive and often difficult to maintain over time. There are technical options to enable communities to have access to very robust technology, data and application expertise, and assure that whatever they do is reliably available without the typical staff and technology worries. Using a third-party organization to 'Host' these environments has become a popular option for both very large and very small organizations. Learn how this has been done in Kansas communities, and what the prospects are for the future.

GIS Management & Next Steps Q & A

Chris Schmeisner, Jefferson County IT Director

GIS Managers Panel (Participants TBA)

Hear the Highly Acclaimed Keynote Presentation made to 6 GIS Outreach Workshops by Chris Schmeisner, followed by Q/A with experienced GIS managers from around the state.

Supporting 911/Dispatch and Emergency Response GIS

Keith Cunningham, Spatial Data Research, Lawrence, KS

Building maps and databases that must be used to support 911 and Dispatch operations requires special knowledge of how those systems are constructed and how the mapping data will interface with them. Discover the nuances, tips and tricks of working with these critically important applications from an experienced practitioner in the industry.

Session Descriptions

Cool Stuff in Orion for Mappers

Ryan Supak, GIS Specialist, Tyler Technologies, Plano, TX

Charlie Sowell, KS Department of Revenue—PVD

If you work in or with the County Appraisers Office, no doubt you have heard about the new Computer Assisted Mass Appraisal (CAMA) software that will be implemented throughout the state over the next several years. This session will highlight some of the tools in Orion that will be of interest to Mappers and those who maintain ownership records in CAMA.

CAD Integration I

Matt Moyer, Ford County IT Dept, Dodge City

Russell Gibson, Morrison-Shipley Engineers, Ft Smith, AR

Computer Assisted Drafting (CAD) and other applications that require precise engineering-level mapping or design applications are often thought of as independent and different than GIS. In many respects that remains true, but sharing data between these software worlds, or integrating CAD in GIS and vice-versa is becoming commonplace. Learn how other communities are handling these situations, and how things have improved with new techniques and tools.

Enterprise GIS—Transitions and Expectations

Brenda Martin, GIS Manager, City of Wichita

Kyle Tjelmeland, GIS Manager, City of Topeka

A J Thomas, GeoSpatial Services Manager, KDHE, Topeka

John Rogers, GIS Manager, Sedgwick County

Several larger organizations are going through major transitions to better support a wider group of GIS applications, both within and outside their organization. The City of Wichita is completing a major Geodatabase Design project focused on migrating to Enterprise GIS for a dozen critical, everyday applications. KDHE is undergoing similar changes to support a much more demanding internal GIS needs, including developing a comprehensive Electronic Disease Surveillance System for Kansas.

National PIN Initiative and National Parcel Mapping Standards

George Donatello, TEAM Consulting, Liberty, MO

Ed Crane, ESRI Kansas City

Melissa Newton-Blume, Ks Dept of Revenue/PVD, Topeka

Digital parcel databases are quite common around the US and seen as a valuable resource for many interests. New initiatives to arrive at a standard PIN reference and easier access to local property databases are being discussed by national committees that may soon impact Kansas.

CAD / GIS Integration II (Roundtable Q/A)

Open forum with audience to exchange ideas.

Enterprise GIS (Roundtable Q/A)

Open forum with audience to exchange ideas.

Executive Board Candidates

Candidate for President-Elect 2006-2007

Darlene Lister

I have been active in KAM since 1997. In 2000, I received the Prestigious Cartographer Award. I served on the Program Committee for 3 years, the Membership Committee for 1 year and was the Treasurer for the years 2001, 2002, 2003, 2005 and 2006. I was instrumental, during my Treasurer's terms, to start investing idle funds in Certificates of Deposit at a greater interest rate than the checking account was receiving. I served on the Executive Board as a Director in 2004 and I'm looking forward to serving as the President Elect for 2007. I'm committed to spreading the word about KAM and the benefits of belonging to KAM to the private entities that I am in contact with on a daily basis. Since my involvement with KAM, I've made many new friends and look forward to working with the Board this next year.

I have worked for the City of Ottawa for 28 years. For the last 14 years I have been the mapping department for the City. My duties include keeping all the maps up to date with new additions, subdivisions and infrastructure as well as specialized maps as requested. This is not an easy task since we receive new preliminary and final plats, concept plans and engineering plans about every week that I review for utility conflicts. I serve as the recording secretary for the City's Development Review Committee (DRC) that meets on the 1st and 3rd Tuesday of each month. In the summer of 2004, we completed a GPS project locating all the sanitary sewer manholes using a Trimble GPS unit, ArcPad, ArcMap and GBA SewerMaster software. In 2005 we collected data on our Electric Distribution system including GPS the poles and inventoried all the attachments. This project was completed during the summer of 2006. This fall will be spent doing a thorough quality control check for map production scheduled for early 2007. Next summer we will begin the inventory of the water distribution system.

Candidate for Treasurer 2006-2007

Beau Dealy

I received my Bachelor's and Master's Degrees from Fort Hays State University, both in Biological Science. I have been in the GIS field since 1997. I spent four years with the USDA Farm Service Agency. While there, I assisted in the establishment of the GIS program at the Ellis County FSA; working in cooperation with the FHSU Geoscience department to develop land use layers for FSA offices nationwide. I also worked on the establishment of statewide procedures and guidelines for data development, quality control, and GIS education for the FSA. From 2001 - 2005, I worked in the GIS department for Sedgwick County, Division of Information and Operations. I worked with the Sedgwick County GIS team to make GIS ubiquitous in day-to-day county operations and public service applications for the Sheriff's office, Fire Department, EMS and 911. I am currently the owner of Dealy Geomatics, through which I continue to strive to make geographic information accessible for regional and local government. I presently blog at <http://dealygeo.wordpress.com>.

Executive Board Candidates

Candidate for Secretary 2006-2007

Sandra Drake

I've been in county government for 17 years and have been the Allen County Appraiser since 1993. I live in Moran, Kansas, a small town of 600 people whose only claim to fame was Debbie Barnes, Miss America 1968. I'm married and have four children and two beautiful twin grandbabies who just turned 1 year old in July. My hobbies include golfing, bowling, camping and stock car racing. Mapping has always been on the back burner for me, always having it assigned to others in the office. However, since going digital I have been involved in the process and find mapping quite interesting and challenging. I look forward to the chance to possibly give something back to KAM for all it has given to me.

Candidates for Directors 2006-2007

Deanna Hermreck

I am delighted to accept your offer to run for Director on the KAM Board. The position seems to be both exciting and challenging, two of the most important aspects of work to me. My experience in the county has been, in the Appraisers Office, as a Data Entry Clerk, Hearing Scheduler for Payment under Protests, filling in under the Personal Property Division, and then transferring to the Mapping Department. I am currently the Mapping/GIS Director at Miami County. I have been employed at Miami County for 16 years and I have been part of KAM for 12 years. I have served on the Membership Committee, Program Committee, and now would like the opportunity to be a Director. While growing up, I lived in the Linn County area, and I now live in the Miami County area. I have been married for 27 years to Lee Hermreck who is also a KAM member. We are the parents of five children. Our son Russ, is currently Assistant Coach of the Paola High School Wrestling Team and a part-time student at Emporia State University. Josh is a current student at KU and Mika is a Junior at Paola High School. Our twins, Adam and Alisha are Sophomores at Paola High School. I enjoy motorcycle riding, quilting, and attending all the kid's activities.

Jerry Mentzer

I am the Woodson County Appraiser and have been since 1990 and have worked in the appraisal and mapping business since 1987. I became a member of KAM in 1991. We started implementing a GIS program in the early 90's and through trial and error plus some excellent help have a pretty comprehensive program in progress. I served several years on the membership committee and the past year as a director, which has been fun and very interesting. I would appreciate your support.

George Overton

I started working in County government January of 1987 as the Trego County Deputy Appraiser. I was appointed Trego County Appraiser in 1989. In 1995 I took the position of Appraiser I / Cartographer in Thomas County. In 2004 I took the Deputy appraiser/Cartographer position in Thomas County. I have been a KAM member since 1991 and earned my KM designation shortly after that. I served as a Director on the KAM executive board in 1993. I will try to do a good job as your Director if elected.

Executive Board Candidates

Candidates for Directors 2006-2007 (continued)

Jack Baines

I started in the Atchison County Appraisers office after working with Sooner Reappraisal Company at the initial start up of reappraisal. I became a County Appraiser in 1992 for Clay County, Kansas and about that time was forced to become a KAM member because I kept showing up at the meetings. I was a member of the Kansas Geospatial Data Standards committee in the late 90's. I did a short stay in Barton County and actually used the GIS program to identify properties after a tornado went through Hoisington, KS. I have always had a strong mapping/GIS interest and I am looking forward to using GIS to help model properties in my newest position as the Deputy County Appraiser in Wyandotte County.

Bruce Hardesty

I am the Project Supervisor/Sales Manager for R&S Digital Services out of Great Bend, KS. I have eight years of experience in supervising GIS projects with R&S Digital Services, which gives me a unique perspective in assisting clients with the implementation of their projects. I provide GIS project requirements, contract administration, client development, and quality control. I also provide presentations to prospective clients and attend county and state conferences throughout Kansas and the Midwest.

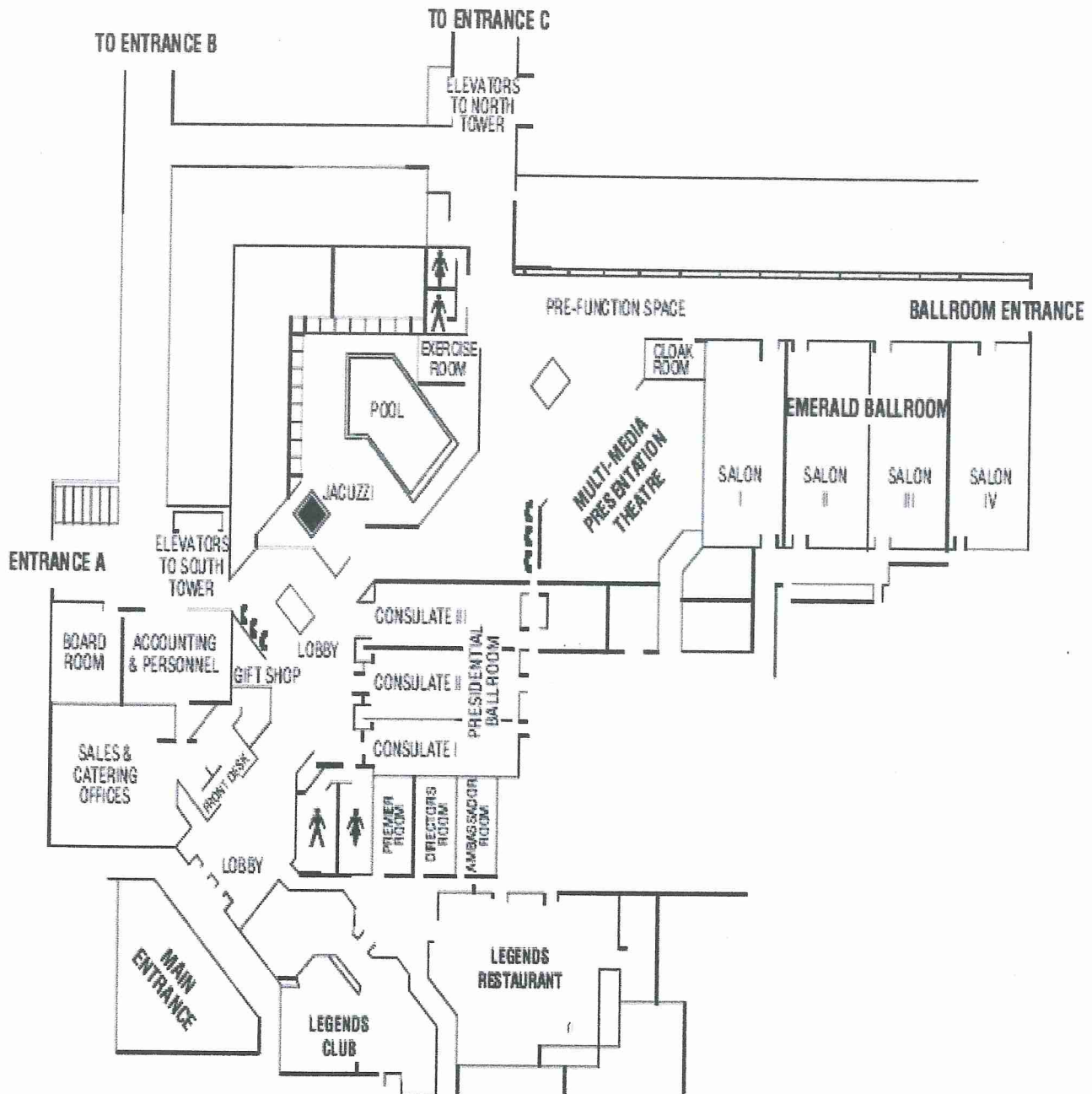
Randy Mayden

I am currently a Sales Manager with MJ Harden/GE Geospatial Solutions and have over twenty years experience developing ortho imagery, topographic, and GIS services for Cities, Counties and private engineering firms. I have served as the Past President of the Missouri Mappers Association and the Kansas City Metro Chapter of the American Public Works Association (APWA) and other numerous local and national conference planning committees. Most recently, I was the Exhibits Chair for the 2006 APWA International Congress Public Works and Exhibition drawing over 10,000 attendees from the United States and abroad. I am currently the General Co-Chair for the APWA 2008 Mid-America Conference and Exhibit. I have been an active member of the Kansas Mappers Association since the late 1980's presenting technical sessions and serving on several committees.

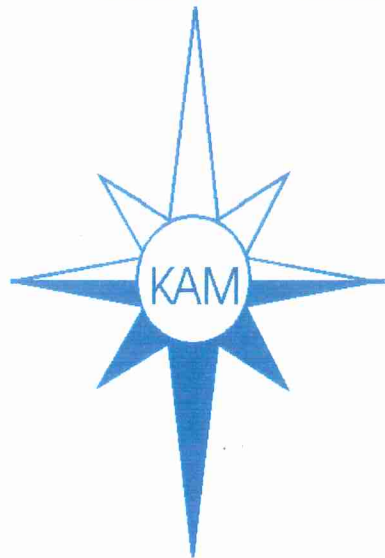
Nick Callaghan

Nicholas J. Callaghan is a Kansas Native who first joined the DASC team in June, 1997, as a student. Upon graduating, he left for Johnson County AIMS for a year, then to work for Prince William County in Virginia for four years. Nick returned to DASC in May 2003. Working on my fourth year at DASC, he has again acclimated to Midwest Living. His duties include processing data requests, SDE support, and cartographic design and production. I am running for one of the several Director positions. Although my only association with KAM up to this point has been membership and attendance to annual meetings, I would like to increase my involvement and help contribute the continued success of KAM. I have over nine years experience participating in Mapping at both the Local and State levels. Before returning to Kansas, I was a part of a very successful organization called VAMLIS (Virginia Association of Mappers and Land Information Systems), which acted in similar manner to that of KAM. I would like to ask for your vote and acceptance to one of the Director seats on the KAM Board. I offer you hard work and support.

Hilton Conference Center



THANK YOU



Thank you for attending the
21st annual KAM conference.
Please travel home safely!